



City of Gonzales Fiscal Year 2025 Budget



Adopted Version - 5/13/2024





TABLE OF CONTENTS

Introduction	3
Transmittal Letter	4
Organization Chart	5
Fire Department	6
Police Department	7
Central Services	8
Finance Department	9
Streets and Drainage Department	10
Buildings and Grounds Department	11
Recreation Department	12
Water and Gas Department	13
Wastewater Department	14
City Council	15
Fund Structure	16
Budget Process	17
Budget Overview	19
Executive Overview	20
Strategic Plan	21
Short-term Factors	22
Priorities & Issues	23
Personnel Changes	24
Summary	27
Fund Summaries	29
General Fund	30
Utility Fund	47
Capital Outlay Fund	58
Industrial Development Board	72
Tanger Mall Economic Dev	73
Wastewater Impact Fees	74
Conway Economic Dev	75
Pace Center Tax	76



INTRODUCTION



Budget Address

Fiscal Year 2024-2025

These budgets reflect a projection of the requirements necessary to ensure that the City of Gonzales continues to provide the level of services it currently provides. There are some assumptions that must be set forth that are relative to the overall operation of the city. Those assumptions are detailed below.

Sales Tax Budget

Sales taxes account for nearly 70% of the revenues in the General Fund and a substantial portion of the revenues in the Capital Outlay Fund. The administration watches sales tax revenue as an important indicator of the city's ability to provide services in the future. The administration projects that the city will collect \$18,978,750 in sales taxes in the 2024-2025 fiscal year compared to \$18,075,000 budgeted in the previous year. This represents a 5.00% increase in sales tax revenue.

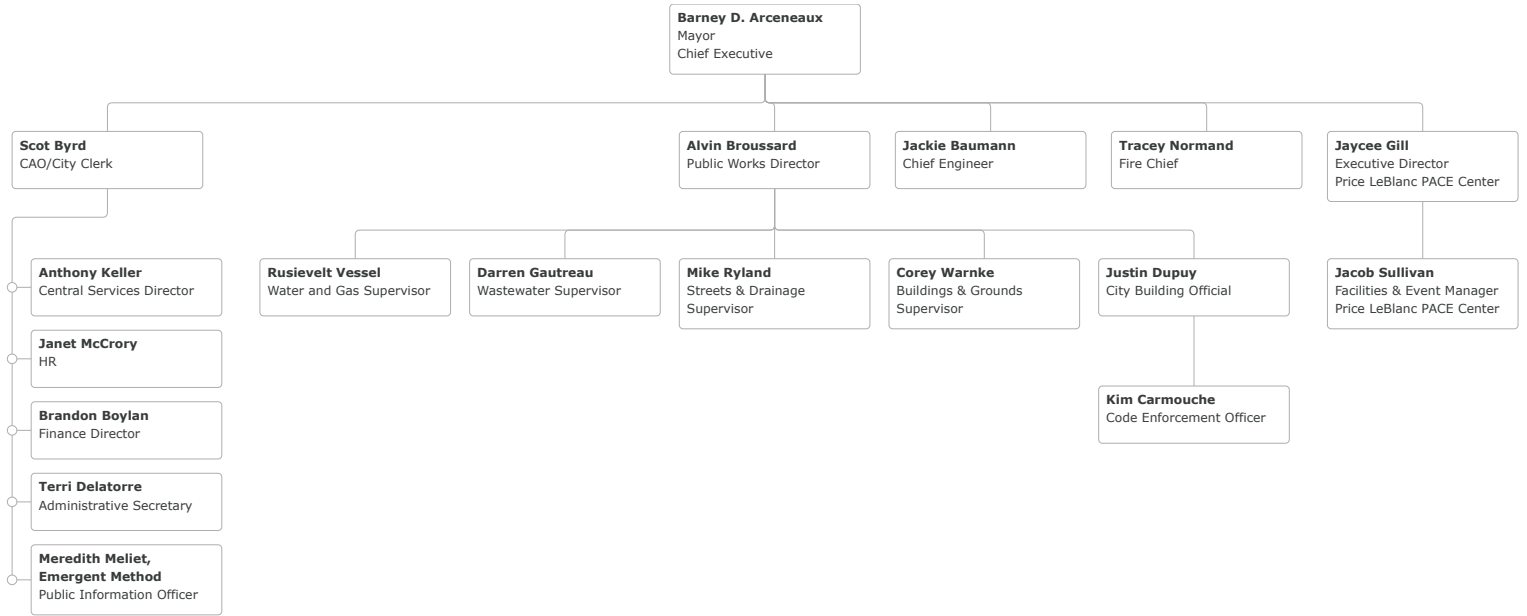
We base this increase on consistent sales tax activity showing month over month increases during the current fiscal year within this range and promising permitting of new sales tax generating facilities within the City in recent months.

Sales Tax Budget Six Year History

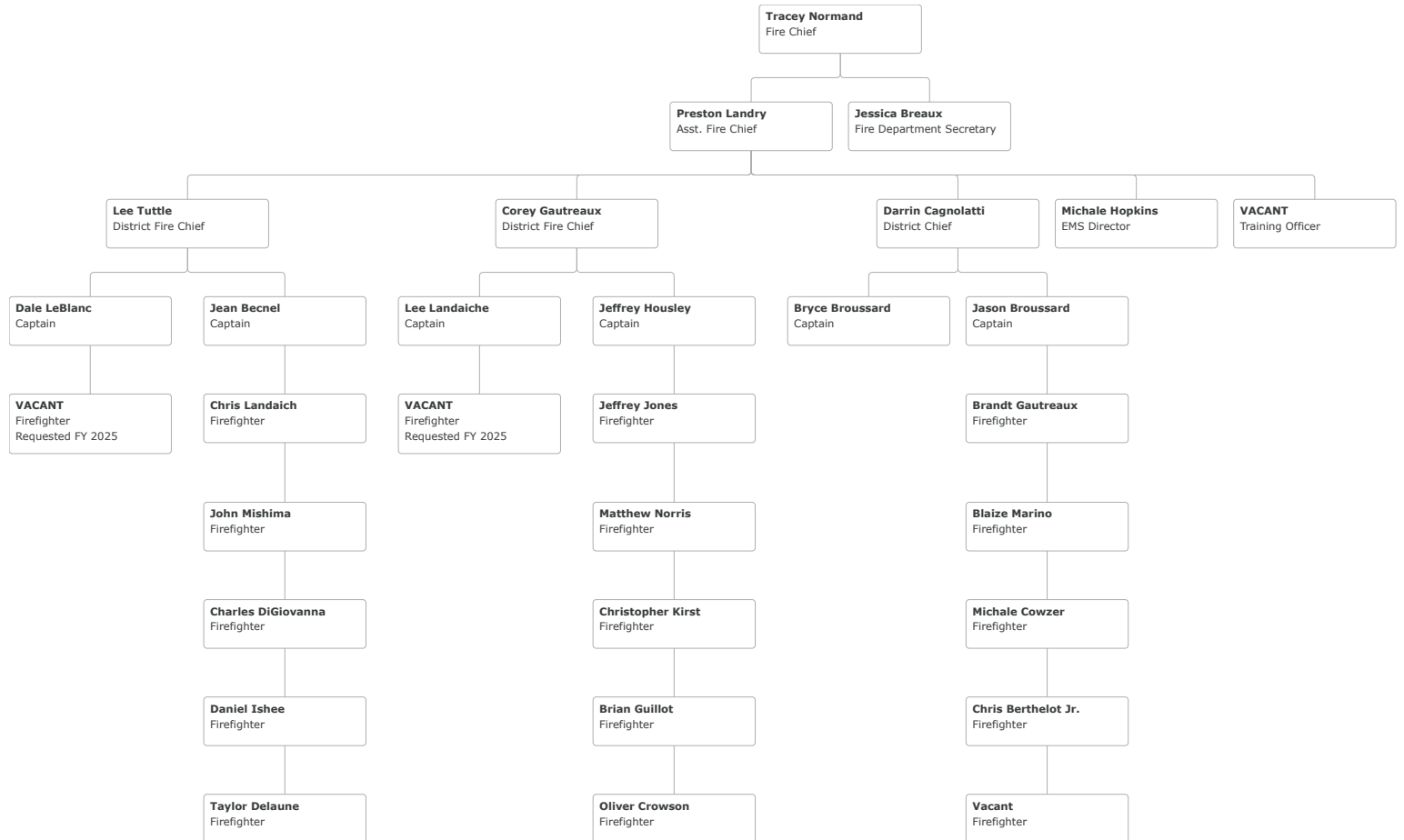
Fiscal Year	Sales Tax Collections	%Increase from Prior Year
FY 2025	\$18,978,750	5.00%
FY 2024	\$18,075,000	4.00%
FY 2023	\$17,380,000	10.00%
FY 2022	\$15,800,000	6.04%
FY 2021	\$14,900,000	0.68%
FY 2020	\$14,800,000	1.37%
FY 2019	\$14,600,000	-3.39%



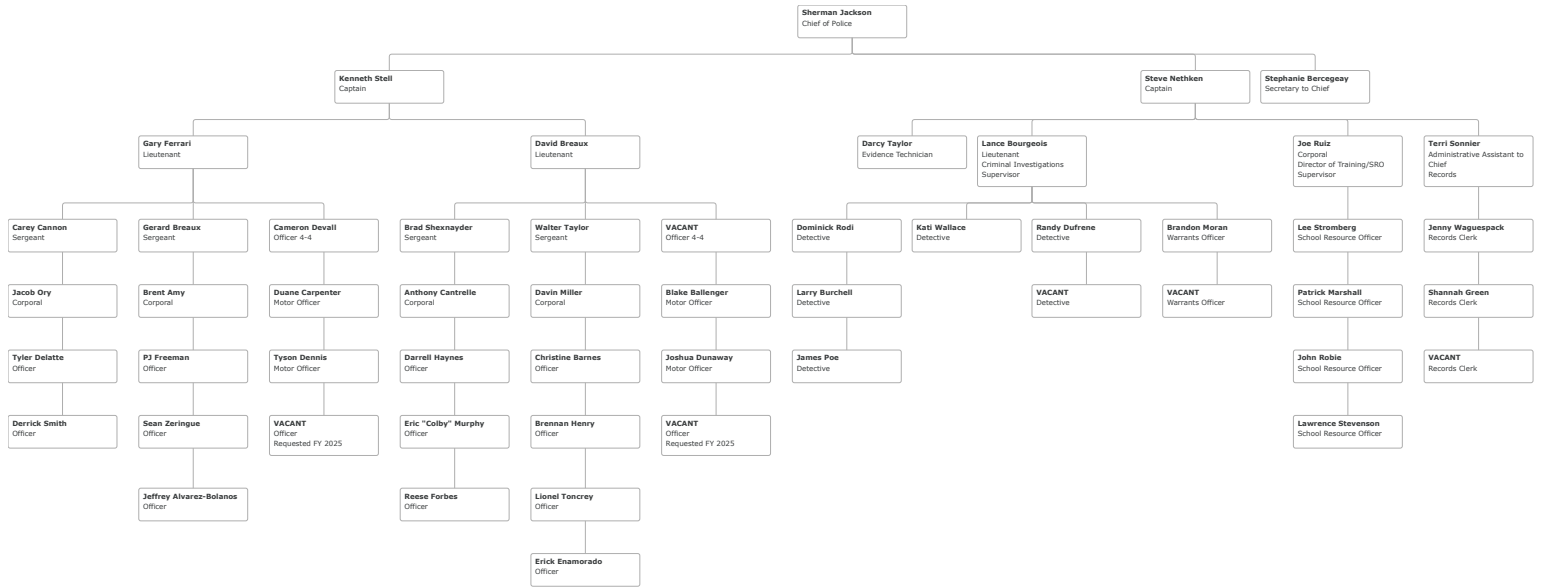
City Organizational Chart



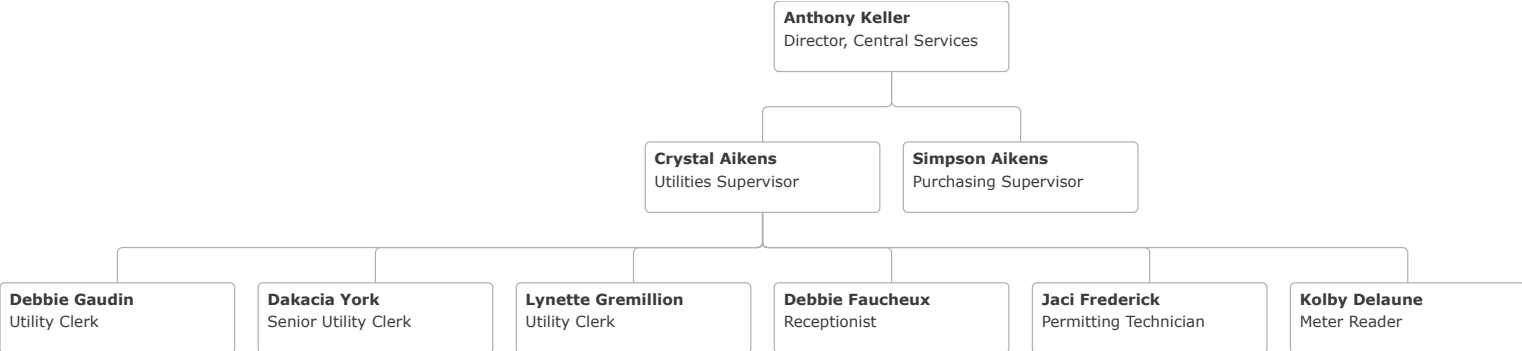
Fire Department Organizational Chart



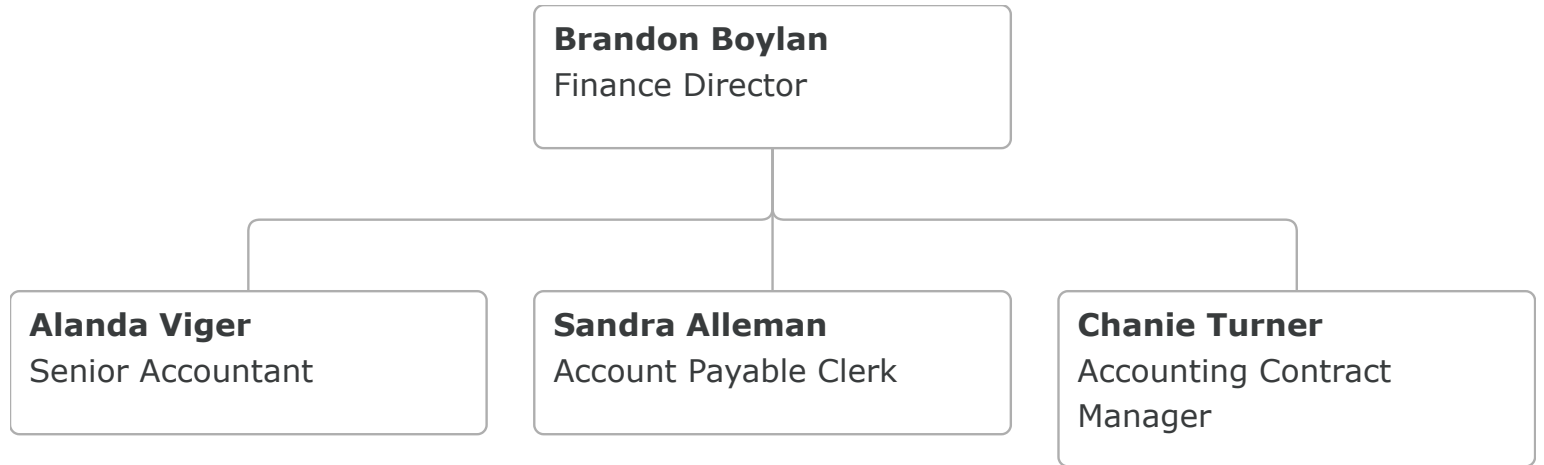
Police Department Organizational Chart



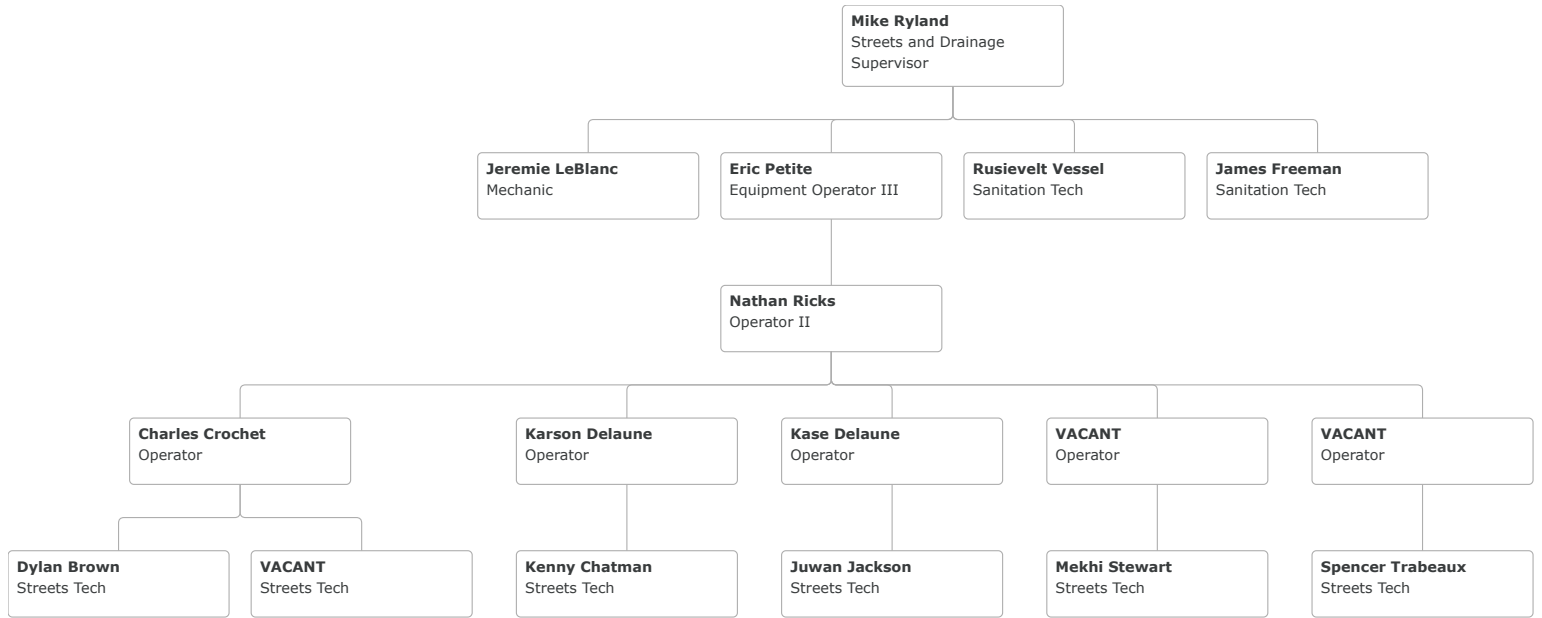
Central Services Organizational Chart



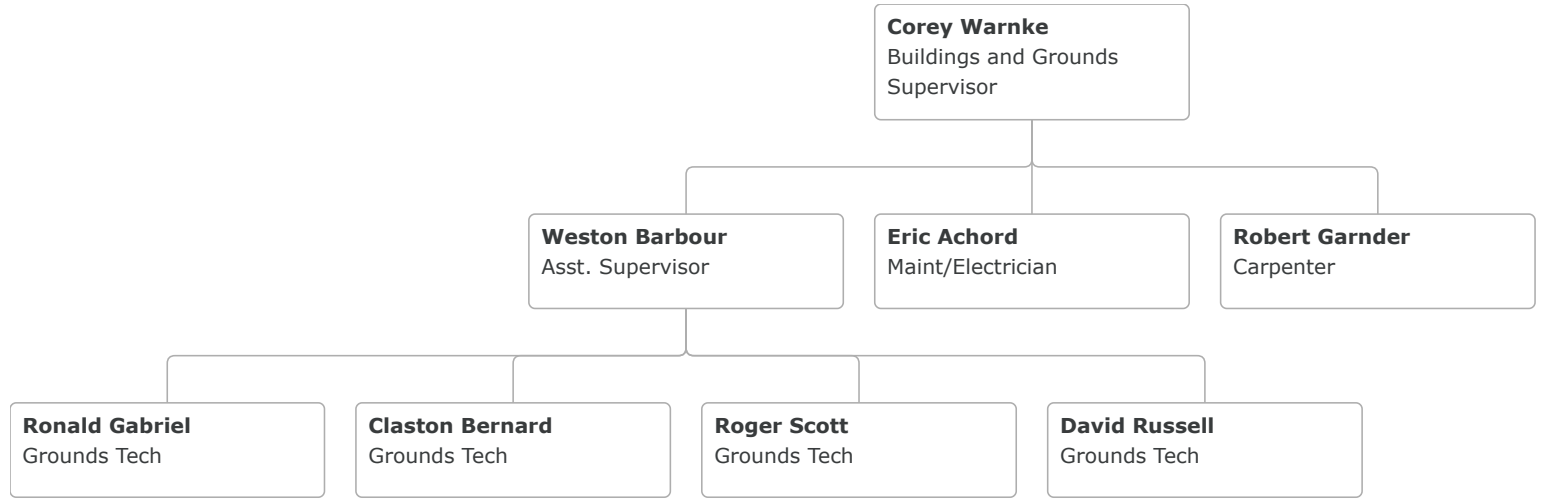
Finance Department Organizational Chart



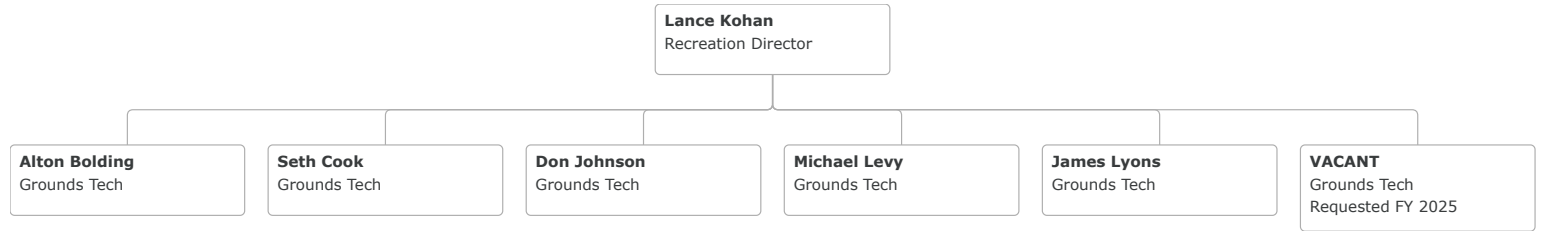
Streets and Drainage Department Organizational Chart



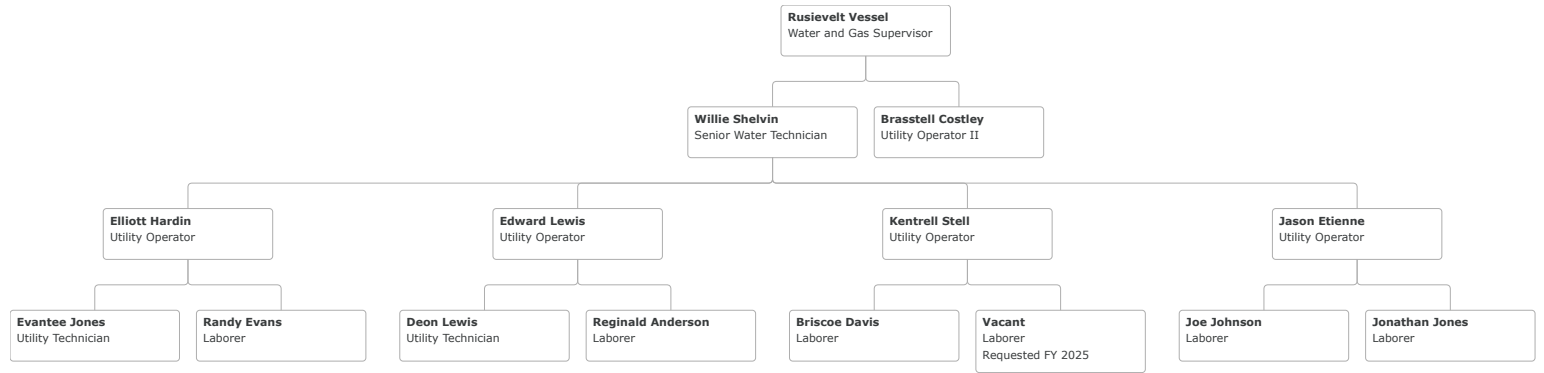
Buildings and Grounds Department Organizational Chart



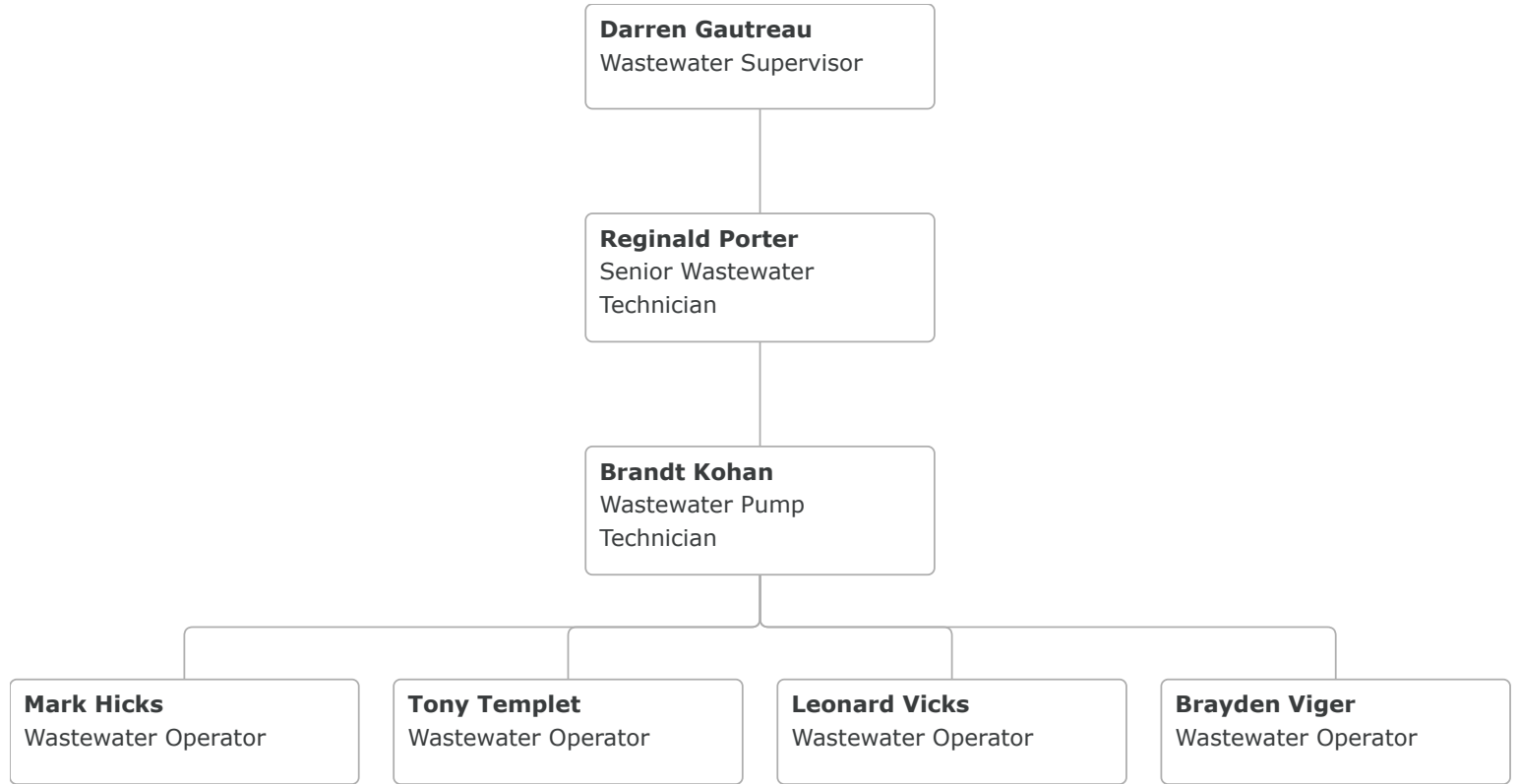
Recreation Department Organizational Chart



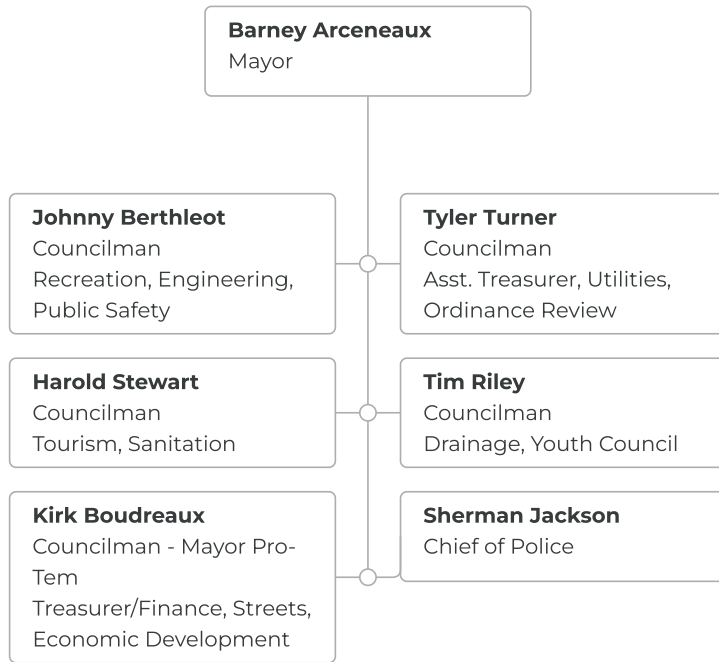
Water and Gas Department Organizational Chart



Wastewater Department Organizational Chart



City of Gonzales Elected Officials



Fund Structure

General Fund. The basis of budgeting and accounting for the General Fund is consideration of current financial resources and the modified accrual basis of accounting. Revenues are recognized as soon as they are both measurable and available. The City considers all revenues reported in the government funds to be available if the revenues are collected within sixty days after year-end. Expenditures are recorded when the related fund liability is incurred, except for principal and interest on general long-term debt. Property taxes, sales taxes, franchise taxes, licenses, grants and interest are considered susceptible to accrual. All other revenues are considered to be measurable and available only when cash is received.

Proprietary Fund. Proprietary funds (utility funds) are budgeted using the full accrual basis. The operating revenues, such as charges for services, are budgeted based on prior year history and number of active users. Non-operating revenues, such as investment earnings and sales tax revenues, are also included in the budgeting process for the proprietary funds.



Budget Timeline

Budget Procedures

The mayor has the overall responsibility for preparing, presenting and administering the annual budget for the general fund and all proprietary funds in accordance with the Local Budget Government Budget Act, La. R.S. 39:1301-1315.

The City's Mayor, Finance Director and City Clerk prepare a proposed budget message and budget, which is submitted to the City Council prior to the beginning of each fiscal year.

A summary of the budget is published and the public is notified that the proposed budget is available for public inspection.

A public hearing is held on the proposed budget at least two weeks after the publication of the public hearing.

A public hearing is held. The budget ordinance is introduced by the City Council.

The budget ordinance is voted on by the City Council two weeks after being introduced.

Budget Amendment

1. Ensure that the City Council adopts a budget amendment (using the appropriate adoption instrument) in an open meeting upon receiving notifications of a 5% variance or a change in operations upon which the original budget was developed.

Timeline of Budget Process





BUDGET OVERVIEW



Executive Overview



The purpose of the budget is to properly allocate limited taxpayer resources to provide the highest quality of life for the City.

The City allocates approximately 60% of its General Fund budget, to provide police, fire and ambulance service to the community.

Maintaining our infrastructure, including streets, drainage, water, gas, sewer is our next highest priority.

We also allocate significant resources to recreation, tourism and community development.

Strategic Plan

In July 2018, the City adopted a seven-year strategic plan that was developed in collaboration with Ascension Economic Development and Louisiana Economic Development. The purpose of a strategic plan is to identify the most important goals to focus on. The vision statement for that document:

"Gonzales is a business and family-friendly city known for the availability of high-quality jobs and excellent schools. The quality of life is outstanding due to its many festivals and concerts in its entertainment district, its various recreational facilities and cultural activities. Gonzales is located centrally between Louisiana's two largest cities, connected to them by passenger rail."

Highlights of the goals for that document are:

1. Develop an event & conference center
2. Partner with other cities to begin rail transit
3. Add a full court basketball gym and community center to the City's recreational facilities
4. Develop a new road corridor in the Hospital District
5. Double the wastewater capacity for the City
6. Reduce blighted properties
7. Encourage redevelopment of the K-Mart, Galleries Plaza and old tire store at 44 & 30 owned by the Robert Family
8. Create more bike and walking connections
9. Help promote the RPCC Technical College



Short-term Factors

Inflation continues to be a challenge in preparing the budget. The costs of goods, particularly steel, medical supplies, fuel and maintenance costs & parts have escalated significantly. We have made appropriate allowances in those line items within the budget.

Recent increases in interest rates mean that the City can expect more interest income on its investments. However, the administration expects that permitting and new housing will slow down, resulting in decreased permitting revenue.

Retirement expense continues to put pressure on the City's ability to provide services as more funds are dedicated to maintaining our obligations for our employees' retirements. There was another increase in the City's contribution requirement for the police retirement system this year, but it was offset by a decrease in other employee retirement required contributions. In FY 2016-2017, the budgeted city contribution for retirement expense was \$1.97 million, and today it is \$3.21 million.



Priorities & Issues

PRICE LEBLANC PACE CENTER

The Price LeBlanc PACE (Performance, Arts, Conference & Events) Center is now in operation. The Center is funded from operational revenue and a dedicated 2% hotel tax within the City. It is not expected to significantly impact the General Fund. Two new hotels recently started operations and we expect a positive impact on the revenue expected to be generated to support the Center.

CARE CENTER

The CARE (Community, Activities, Recreation and Education) Center will possibly be close to completion during this fiscal year. It is not expected to be operational this year. When it begins operations, it will have a moderate increase to the Recreation Department budget for its support. This is an important component of the City's strategic economic development strategy that was adopted in 2018. The City has allocated \$4 million in American Rescue Plan funding and will receive an additional \$3 million from the US Department of Housing and Urban Development (HUD) to help construct this \$7.1 million facility and the City.

ST. FRANCIS PKWY EXTENSION

In fiscal year 2024, the City completed this \$4M project to build a road to help alleviate some traffic on Hwy 30 and to provide an alternate access by the hospital. The City received \$3.4M in funds contributed by the State of Louisiana and the City provided the required 20% match. In fiscal year 2025, the City has allocated \$800K in Capital Outlay funds to construct a road connecting St. Francis Pkwy to Our Lady of the Lake Hospital, which provides an alternate route for quicker access to the hospital.

WASTEWATER PLANT CONVERSION TO SOLAR POWER

This is an important component to the City's Climate Action Plan adopted in 2023. The City will receive \$1,000,000 in federal funds to help finance this project.

BUILDING PERMITTING (MORTGAGE INTERESTS RATES)

The City has seen a dramatic decrease in residential permitting since interests rates have escalated. Accordingly, the administration has reduced the expected revenue from permitting.

SALES TAXES

The City continues to enjoy healthy sales tax revenues and permitting of new retail businesses expected to generate sales taxes continues to be robust. Nevertheless, the administration maintains a cautious approach this fiscal year in budgeting a 5% increase in sales taxes than last year.

COSTS OF OPERATING UTILITIES

The costs of operating our utility departments continues to increase as we comply with increasing regulations and safety requirements. In fiscal year 2023, the City conducted a rate study on our water system and concluded that we are covering the operating costs for the water department adequately with our fees for services and a portion of a dedicated sales tax. We will continue to monitor our rates and make adjustments as necessary to be assured that we can provide the service our citizens expect.



Personnel Changes

Retirement

The Municipal Employees Retirement System (MERS) employer portion of the retirement premium will decrease by 1.5% from 29.50% to 28%. The employer portion of the Municipal Police Employees Retirement System (MPERS) will increase by 1.25%, from 34.35% to 35.6%.

With the decrease in the MERS rate slightly outpacing the MPERS rate increase, the City's total retirement costs are slightly decreasing from \$3,221,166 in FY 2024 to \$3,217,495 in fiscal year (FY) 2025, essentially remaining flat. The last time MERS decreased the employer contribution rate was from the FY 2007 rate of 16.25% to the FY 2008 rate of 13.5%. The City will continue to monitor these rate changes in the years to come and take a cautious approach.

Personnel Requests

The administration has included a 2% cost of living increase to help our dedicated employees maintain their standard of living, effective the payroll period beginning June 5, 2024.

The Police department has requested two additional Police Officer positions. This request is to increase the presence of the police force and help deter criminal activity.

The Fire Department has requested two new Fire Fighter positions. Call volume has increased as the City has grown, and this additional support is needed to maintain adequate response time.

The Recreation Department has requested 1 part-time position be converted to a full-time position to maintain growth.

The Water & Gas department has requested 1 additional position to maintain growth.

The City anticipates a change in the positions of Mayor and Police Chief in the next election cycle. The City has previously adopted a pay schedule for all positions in the City, including those of Police Chief and Mayor and this schedule is hereby readopted. A copy of the current salary schedule is included in this budget, which does not include the anticipated 2% cost of living increase for all employees. The newly elected mayor's pay will be Range 26 and the newly elected police chief's pay will be Range 24. The step will be based on years of completed service with the City at the time of induction in the office. At the time of induction into office, those salaries will be 2% higher than the included chart.

Health Insurance

The City's health insurance budget is expected to increase from \$1,780,000 to \$2,049,000 in the upcoming year, or \$268K, which represents a 15% increase from last year. Last year, the City added the option of a Local Network in addition to the National Network. Employees selecting the Local Network contribute the same as before and those selecting the National Network contribute slightly more. This is the first increase in employee contributions in 7 years, despite ever-increasing costs for healthcare coverage.

Monthly budgeted health insurance premiums are listed below:

Employee Health Insurance Contributions

Coverage	Monthly Rate	Bi-Weekly	Monthly Rate	Bi-Weekly
	Local Hospital Network		National PPO Network	
Single Coverage	\$150.00	\$69.23	\$175.00	\$80.77
Family	\$350.00	\$161.54	\$450.00	\$207.69
Participant + Spouse	\$325.00	\$150.00	\$400.00	\$184.62
Participant + Child	\$300.00	\$138.46	\$350.00	\$161.54



Schedule of Pay for All Employees - FY 2024

RANGE	STEP 1	STEP 2	STEP 3	STEP 4	STEP 5	STEP 6	STEP 7	STEP 8	STEP 9	STEP 10	STEP 11	STEP 12	STEP 13	STEP 14
1	33,239	33,989	34,785	35,581	36,377	37,218	38,059	38,946	39,787	40,719	41,674	42,606	43,561	44,561
	15.98	16.34	16.72	17.11	17.49	17.89	18.30	18.72	19.13	19.58	20.04	20.48	20.94	21.42
2	34,899	35,694	36,536	37,354	38,195	39,059	39,969	40,855	41,810	42,788	43,720	44,720	45,766	46,812
	16.78	17.16	17.57	17.96	18.36	18.78	19.22	19.64	20.10	20.57	21.02	21.50	22.00	22.51
3	36,649	37,491	38,332	39,218	40,128	41,015	41,969	42,947	43,925	44,902	45,925	46,994	48,085	49,177
	17.62	18.02	18.43	18.86	19.29	19.72	20.18	20.65	21.12	21.59	22.08	22.59	23.12	23.64
4	38,468	39,355	40,242	41,151	42,083	43,061	44,061	45,039	46,039	47,108	48,199	49,313	50,427	51,586
	18.49	18.92	19.35	19.78	20.23	20.70	21.18	21.65	22.13	22.65	23.17	23.71	24.24	24.80
5	40,401	41,333	42,242	43,220	44,220	45,243	46,244	47,289	48,381	49,495	50,632	51,768	52,951	54,156
	19.42	19.87	20.31	20.78	21.26	21.75	22.23	22.74	23.26	23.80	24.34	24.89	25.46	26.04
6	42,424	43,379	44,402	45,402	46,426	47,471	48,563	49,654	50,791	51,950	53,132	54,315	55,542	56,816
	20.40	20.86	21.35	21.83	22.32	22.82	23.35	23.87	24.42	24.98	25.54	26.11	26.70	27.32
7	44,538	45,562	46,585	47,653	48,722	49,836	50,950	52,109	53,292	54,497	55,747	56,975	58,271	59,726
	21.41	21.90	22.40	22.91	23.42	23.96	24.50	25.05	25.62	26.20	26.80	27.39	28.01	28.71
8	46,767	46,880	48,926	50,063	51,223	52,382	53,587	54,838	56,088	57,429	58,725	60,044	61,408	62,772
	22.48	22.54	23.52	24.07	24.63	25.18	25.76	26.36	26.97	27.61	28.23	28.87	29.52	30.18
9	49,086	50,222	51,359	52,541	53,769	54,997	56,270	57,566	58,862	60,180	61,545	62,931	64,386	65,910
	23.60	24.15	24.69	25.26	25.85	26.44	27.05	27.68	28.30	28.93	29.59	30.26	30.96	31.69
10	51,564	52,746	53,951	55,201	56,452	57,725	59,021	60,362	61,726	63,159	64,637	66,092	67,592	69,115
	24.79	25.36	25.94	26.54	27.14	27.75	28.38	29.02	29.68	30.36	31.08	31.77	32.50	33.23
11	54,133	55,361	56,611	57,884	59,203	60,544	61,931	63,409	64,841	66,296	67,819	69,388	70,934	72,548
	26.03	26.62	27.22	27.83	28.46	29.11	29.77	30.49	31.17	31.87	32.61	33.36	34.10	34.88
12	56,816	58,111	59,430	60,794	62,249	63,682	65,091	66,569	68,092	69,661	71,230	72,889	74,549	76,254
	27.32	27.94	28.57	29.23	29.93	30.62	31.29	32.00	32.74	33.49	34.25	35.04	35.84	36.66
13	59,748	61,067	62,431	63,841	65,296	66,796	68,342	69,866	71,457	73,094	74,776	76,459	78,255	80,028
	28.73	29.36	30.01	30.69	31.39	32.11	32.86	33.59	34.35	35.14	35.95	36.76	37.62	38.48
14	62,659	64,068	65,546	67,092	68,570	70,161	71,775	73,390	75,072	76,777	78,528	80,301	82,165	84,030
	30.12	30.80	31.51	32.26	32.97	33.73	34.51	35.28	36.09	36.91	37.75	38.61	39.50	40.40
15	65,819	67,297	68,843	70,434	72,025	73,662	75,322	77,095	78,823	80,688	82,484	84,371	86,303	88,259
	31.64	32.35	33.10	33.86	34.63	35.41	36.21	37.07	37.90	38.79	39.66	40.56	41.49	42.43
16	69,070	70,661	72,253	73,913	75,595	77,323	79,073	80,892	82,711	84,644	86,553	88,531	90,555	92,624
	33.21	33.97	34.74	35.53	36.34	37.17	38.02	38.89	39.76	40.69	41.61	42.56	43.54	44.53



17	72,526	74,208	75,913	77,618	79,437	81,233	83,098	84,962	86,940	88,918	90,919	93,033	95,125	97,307
	34.87	35.68	36.50	37.32	38.19	39.05	39.95	40.85	41.80	42.75	43.71	44.73	45.73	46.78
18	76,163	77,891	79,687	81,483	83,370	85,280	87,213	89,213	91,260	93,328	95,466	97,625	99,854	102,150
	36.62	37.45	38.31	39.17	40.08	41.00	41.93	42.89	43.87	44.87	45.90	46.94	48.01	49.11
19	79,983	81,802	83,643	85,553	87,531	89,486	91,532	93,647	95,761	97,966	100,149	102,445	104,787	107,220
	38.45	39.33	40.21	41.13	42.08	43.02	44.01	45.02	46.04	47.10	48.15	49.25	50.38	51.55
20	83,962	85,871	87,827	89,873	91,896	93,988	96,125	98,353	100,604	102,900	105,265	107,674	110,153	112,654
	40.37	41.28	42.22	43.21	44.18	45.19	46.21	47.29	48.37	49.47	50.61	51.77	52.96	54.16
21	88,168	90,191	92,214	94,329	96,489	98,671	100,945	103,264	105,628	108,016	110,471	113,040	115,586	118,224
	42.39	43.36	44.33	45.35	46.39	47.44	48.53	49.65	50.78	51.93	53.11	54.35	55.57	56.84
22	92,578	94,693	96,852	99,058	101,286	103,605	105,969	108,425	110,880	113,381	115,950	118,587	121,384	124,135
	44.51	45.53	46.56	47.62	48.70	49.81	50.95	52.13	53.31	54.51	55.75	57.01	58.36	59.68
23	97,193	99,422	101,695	103,991	106,333	108,766	111,267	113,813	116,450	119,110	121,793	124,544	127,431	130,319
	46.73	47.80	48.89	50.00	51.12	52.29	53.49	54.72	55.99	57.26	58.55	59.88	61.27	62.65
24	102,082	104,401	106,765	109,198	111,721	114,268	116,860	119,497	122,202	125,044	127,886	130,796	133,797	136,821
	49.08	50.19	51.33	52.50	53.71	54.94	56.18	57.45	58.75	60.12	61.48	62.88	64.33	65.78
25	107,174	109,630	112,085	114,654	117,246	119,929	122,725	125,499	128,364	131,296	134,298	137,390	140,459	143,710
	51.53	52.71	53.89	55.12	56.37	57.66	59.00	60.34	61.71	63.12	64.57	66.05	67.53	69.09
26	112,494	115,086	117,746	120,406	123,134	125,954	128,841	131,751	134,798	137,867	141,027	144,233	147,507	150,894
	54.08	55.33	56.61	57.89	59.20	60.55	61.94	63.34	64.81	66.28	67.80	69.34	70.92	72.55

UTILITY FUND BUDGET

Natural Gas

We are projecting that the city will spend approximately \$1,080,000 purchasing natural gas for FY 2024-2025. The city's gas sales are projected to be approximately \$1,885,000. Although we have more customers, the price of gas has gone down, so we project expense and revenue to be about the same.

The city's cost of operating the Gas Department is projected to be approximately 2,230,650. The natural gas rate charged by the city is a function of the price paid by the city for gas and the cost of operating the city's gas department broken down by MCF.

Utility Rates

The City completed a water rate study in January of 2023. This study concluded that our current rates, with the current provision for inflation and supplemented by a dedicated sales tax, were sufficient to maintain the system in good order.

Sewer rates will increase 5% and water rates will increase 3% to keep up with inflation and the increased costs of operating the system.

DEBT

DEQ STATE REVOLVING LOAN

The city currently has one outstanding loan with the DEQ State Revolving Loan Fund for Wastewater Improvements. The improvements were completed in 2020. The current loan balance is \$8,302,472.

In accordance with bond covenants, the city has established a "Series 2014 Bond Reserve Fund" and a "Utility Fund Investment Account", both serving the purpose of securing future loan payments in case of impending default. Current balances in these accounts total \$526,072.

LDH STATE REVOLVING LOAN

The city currently has one outstanding loan with the LDH State Revolving Loan Fund for Water System Improvements related to replacing and relocating our main water line on Roddy Road. The improvements were completed in 2022. The current loan balance is \$1,902,475.

In accordance with bond covenants, the city has established a "Series 2022 Bond Reserve Fund" for the purpose of securing future loan payments in case of impending default. Current balances in these accounts total \$103,320.

HANCOCK WHITNEY CONFERENCE CENTER LOAN

The city currently has one outstanding loan with Hancock Whitney Bank for the construction loan related to building the Price LeBlanc PACE Center, which is currently in progress. The current loan balance is \$4,417,000.

In accordance with bond covenants, the city has established a "Hancock Whitney PACE Center Loan Reserve" for the purpose of securing future loan payments in case of impending default. Current balances in these accounts total \$176,018.



CAPITAL OUTLAY BUDGET

The city is proposing a Capital Outlay Budget of \$24,999,691.

The proposed Capital Outlay Budget is highlighted by \$7.2 million in proposed construction of a new community, activities, recreation and education center. \$3 million of this work will be financed by the US Department of Housing and \$4 million will be funded by the American Rescue Plan Act funds.

The city has budgeted \$6.4 million for various road improvement projects, including \$2.3 million for the Bayou Boyle Detention Project for 53 acres, \$500,000 for Kennedy Heights drainage improvements, \$350,000 for the City's contribution to the \$10 million Airline Hwy Superstreet Project, \$800,000 for design work related to connecting St. Francis Parkway to the hospital road system, and \$2,000,000 for various road rehabilitation projects.

The City Fire Department needs a new engine and new ambulance and received permission in last year's budget to place those orders because these pieces of equipment have a long delivery time. After ordering, it is expected it could take between 30 and 36 months to take delivery. The City has reserves to support funding these items. Approximate costs are:

Ambulance \$300,000

Fire Engine \$800,000

SUMMARY

The city administration has prepared this presentation to the best of our ability with the knowledge of the financial circumstances of the city and economic outlook for this time. We feel that we have herein fairly represented revenues and expenditures and the overall positive impact they will have on present and future endeavors of this administration.

It is the intent of this presentation to hereby grant the Mayor the power to administer these budgets within a margin of plus or minus 5%, this being presented in the interest of expediency, legality, and/or unforeseen and unplanned emergencies.



FUND SUMMARIES



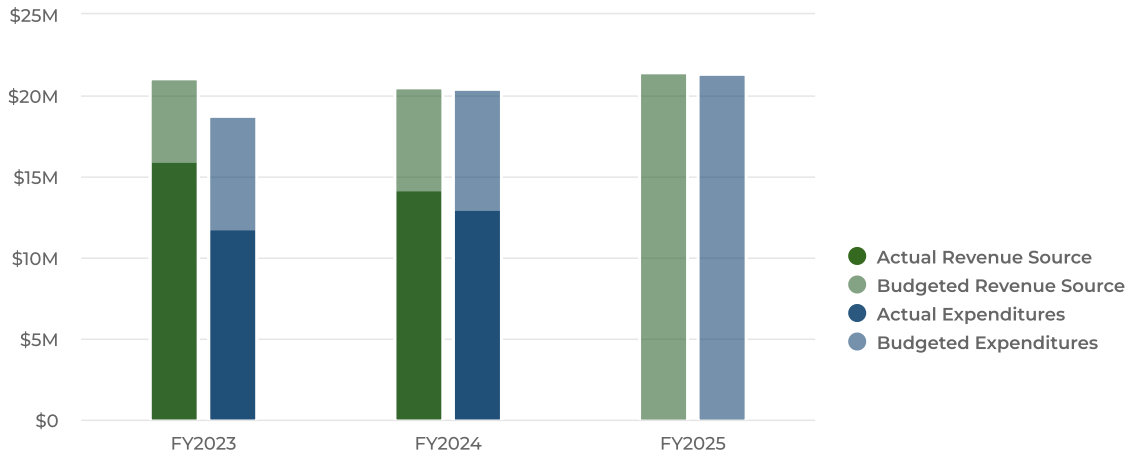


General Fund

The General Fund is the main operating fund for the City. It accounts for sources and uses of funds to provide services to the public, including public safety services such as police, fire and ambulance service. Public Safety services account for most of the expenditures in the General Fund.

Other services include streets, drainage, waste collection, code enforcement, business licenses, recreation and maintenance of city owned facilities.

Summary



Revenue by Fund

Name	FY2023 Actuals	FY2024 Original Budget	FY2024 Projected Actual	FY2024 Amended Budget	FY2025 Original Budget	FY2024 Amended Budget vs. FY2025 Original Budget (% Change)
General Fund						
Taxes						
PROPERTY TAXES	\$944,124	\$1,050,000	\$1,117,402	\$1,050,000	\$1,050,000	0%
SALES TAX APPROPRIATIONS	\$9,367,239	\$9,038,000	\$9,586,135	\$9,038,000	\$9,490,000	5%
SALES TAX APPRO. (SERIES-2001)	\$4,683,620	\$4,519,000	\$4,793,068	\$4,519,000	\$4,745,000	5%
BEER TAX	\$47,061	\$44,000	\$41,144	\$44,000	\$44,000	0%
Total Taxes:	\$15,042,044	\$14,651,000	\$15,537,749	\$14,651,000	\$15,329,000	4.6%
Permits, Fees & Licenses						
INSURANCE PREMIUM TAX	\$506,374	\$410,000	\$367,259	\$410,000	\$410,000	0%
CONTRACTOR'S LICENSE	\$43,600	\$42,000	\$39,563	\$42,000	\$42,000	0%
OCCUPATIONAL LICENSE	\$972,717	\$925,000	\$503,481	\$925,000	\$930,000	0.5%
BUILDING PERMITS	\$353,514	\$220,000	\$212,967	\$220,000	\$220,000	0%

Name	FY2023 Actuals	FY2024 Original Budget	FY2024 Projected Actual	FY2024 Amended Budget	FY2025 Original Budget	FY2024 Amended Budget vs. FY2025 Original Budget (% Change)
LIQUOR & BEER PERMITS	\$12,435	\$13,000	\$17,655	\$13,000	\$13,000	0%
NSF CHECK FEES (POLICE DEPT)	\$25		\$0	\$0	\$0	0%
FINES/FORFEITURES/COURT COST	\$77,054	\$126,000	\$88,249	\$126,000	\$110,000	-12.7%
GARBAGE FEES COLLECTED	\$11,395	\$12,500	\$11,230	\$12,500	\$12,500	0%
Total Permits, Fees & Licenses:	\$1,977,114	\$1,748,500	\$1,240,403	\$1,748,500	\$1,737,500	-0.6%
Franchise Fees						
FRANCHISE FEES - ENTERGY	\$1,192,491	\$1,000,000	\$826,149	\$1,000,000	\$1,000,000	0%
FRANCHISE FEES - CABLE/TELEPHO	\$227,266	\$240,000	\$167,197	\$240,000	\$240,000	0%
FRANCHISE FEES - ATMOS	\$20,559	\$11,500	\$18,832	\$11,500	\$12,000	4.3%
Total Franchise Fees:	\$1,440,316	\$1,251,500	\$1,012,178	\$1,251,500	\$1,252,000	0%
Interest Income						
INSURANCE REIMBURSEMENTS	\$11,137	\$2,000	\$0	\$2,000	\$2,000	0%
INTEREST EARNED	\$181,150	\$100,000	\$94,749	\$100,000	\$100,000	0%
Total Interest Income:	\$192,287	\$102,000	\$94,749	\$102,000	\$102,000	0%
State Contracts						
STATE CONTRACTS	\$14,940	\$14,940	\$22,410	\$14,940	\$14,940	0%
Total State Contracts:	\$14,940	\$14,940	\$22,410	\$14,940	\$14,940	0%
Fire Dept Revenue						
POLICE DEPT REIMBURSEMENT	\$1,000		\$750	\$0	\$0	0%
FIRE DEPT. PROPERTY TAX	\$584,718	\$650,000	\$692,026	\$650,000	\$650,000	0%
FIRE DISTRICT NO. 1 REVENUE	\$120,000	\$120,000	\$105,000	\$120,000	\$120,000	0%
FIRE DEPT REVENUE	\$56,873	\$36,000	\$73,671	\$36,000	\$46,000	27.8%
AMBULANCE REVENUES	\$698,826	\$645,000	\$800,511	\$645,000	\$700,000	8.5%
Total Fire Dept Revenue:	\$1,461,417	\$1,451,000	\$1,671,959	\$1,451,000	\$1,516,000	4.5%
Miscellaneous Income						
DONATIONS - GENERAL	\$1,450		\$0	\$0	\$0	0%
PLANNING & ZONING FEES	\$46,445	\$25,000	\$29,078	\$25,000	\$25,000	0%
TRANSFER FROM OTHER FUNDS	\$26,504		\$0	\$0	\$0	0%
PD EVID RM SALE REV	\$14,258		\$39	\$0	\$0	0%
ALL OTHER REVENUES	\$248	\$500	-\$8	\$500	\$500	0%
COFFEE TABLE BOOK SALES	\$25		\$0	\$0	\$0	0%
SURPLUS SALES REVENUE	\$70,804	\$75,000	\$63,476	\$75,000	\$85,000	13.3%



Name	FY2023 Actuals	FY2024 Original Budget	FY2024 Projected Actual	FY2024 Amended Budget	FY2025 Original Budget	FY2024 Amended Budget vs. FY2025 Original Budget (% Change)
RECREATION CONCESSION SALES	\$12,606	\$10,000	\$10,918	\$10,000	\$10,000	0%
SPRING BASEBALL REVENUE	\$12,820	\$35,000	\$30,890	\$35,000	\$35,000	0%
BASEBALL TOURNAMENT REVENUE	\$0	\$3,000	\$1,644	\$3,000	\$3,000	0%
MAYOR'S PRAYER BREAKFAST	\$1,600	\$1,600	\$2,780	\$1,600	\$1,600	0%
FALL BASEBALL REVENUE	\$24,375	\$20,000	\$24,081	\$20,000	\$20,000	0%
DIXIE BASEBALL SPONSORSHIP	\$2,700	\$3,000	\$1,013	\$3,000	\$3,000	0%
COACHES PITCH LEAGUE REVENUE	\$350		\$0	\$0	\$0	0%
T BALL LEAGUE REVENUE	\$0	\$1,000	\$0	\$1,000	\$1,000	0%
BALLFIELD RENTALS	\$8,150		\$9,300	\$0	\$5,000	N/A
BASKETBALL REVENUE	\$13,100	\$12,000	\$16,945	\$12,000	\$12,000	0%
Total Miscellaneous Income:	\$235,434	\$186,100	\$190,154	\$186,100	\$201,100	8.1%
Grant Income						
GRANTS - POLICE - APSB	\$211,127	\$211,127	\$74,940	\$211,127	\$305,744	44.8%
GRANTS - POLICE - OLOL	\$523,263	\$450,000	\$477,026	\$450,000	\$525,000	16.7%
GRANTS - POLICE - MENTAL HEALTH	\$84,000	\$82,000	\$100,800	\$82,000	\$90,000	9.8%
GRANTS - PD ODOCA	\$3,550	\$7,000	\$0	\$7,000	\$7,000	0%
GRANTS - POLICE GEN FUND	\$1,400	\$16,000	\$0	\$16,000	\$16,000	0%
GRANTS - PD LHSC OT	\$6,120	\$30,000	\$10,024	\$30,000	\$30,000	0%
GRANTS - PD DEA	\$30,047	\$25,000	\$53,537	\$25,000	\$25,000	0%
GRANTS - PD OCDETF	\$17,166		\$0	\$0	\$0	0%
GRANTS - FEMA	\$0		\$551,178	\$0	\$0	0%
GRANTS - VISITORS ENTERP. FUND	\$155,000	\$150,000	\$150,000	\$150,000	\$150,000	0%
GRANTS - PRIVATE	\$15,397		\$0	\$0	\$0	0%
Total Grant Income:	\$1,047,069	\$971,127	\$1,417,504	\$971,127	\$1,148,744	18.3%
Rental Revenue						
RENTALS - DMV	\$72,163	\$70,000	\$52,610	\$70,000	\$70,000	0%
RENTALS - CENTRO CRIST CHURCH	\$10,800	\$8,400	\$8,100	\$8,400	\$8,400	0%
RENTALS - TENNIS PRO SHOP	\$0	\$2,400	\$0	\$2,400	\$2,400	0%
RENTALS - CIVIC CENTER	\$77,819	\$60,000	\$52,339	\$60,000	\$60,000	0%
RENTALS - CITY ROOM	\$10,375	\$6,000	\$6,958	\$6,000	\$6,000	0%
RENTALS - CITY ROOM ANNEX	\$4,500	\$3,000	\$2,100	\$3,000	\$0	-100%
RENTALS - AMPHITHEATRE	\$2,550	\$2,000	\$10,629	\$2,000	\$2,000	0%



Name	FY2023 Actuals	FY2024 Original Budget	FY2024 Projected Actual	FY2024 Amended Budget	FY2025 Original Budget	FY2024 Amended Budget vs. FY2025 Original Budget (% Change)
RENTALS - SPRAYGROUND GAZEBO	\$650	\$1,000	-\$75	\$1,000	\$1,000	0%
RENTALS - CARVER PARK	-\$50	\$1,000	-\$450	\$1,000	\$1,000	0%
Total Rental Revenue:	\$178,807	\$153,800	\$132,211	\$153,800	\$150,800	-2%
Total General Fund:	\$21,589,427	\$20,529,967	\$21,319,316	\$20,529,967	\$21,452,084	4.5%



City of Gonzales Police Officers Tyson Dennis and Pat Marshall talk about Halloween Safety and what it's like to be a Police Officer.



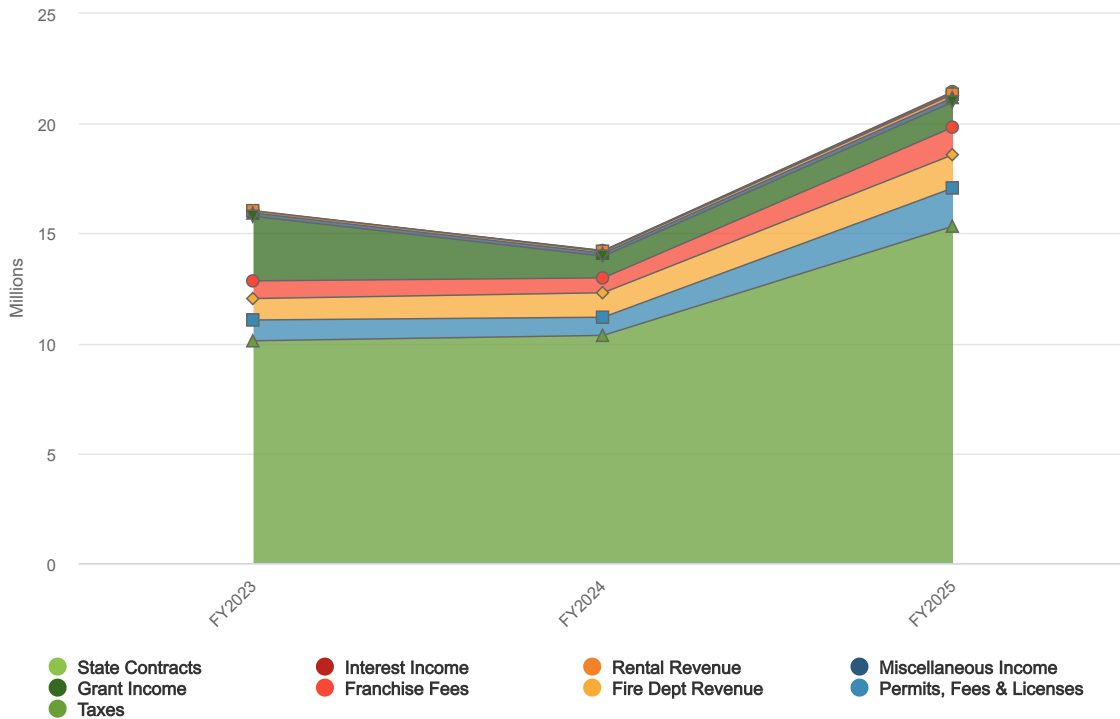
Our 4H supports your Class 1 Gonzales Fire Department.



Sanitation crew with grapple truck keeping our city beautiful.

Revenues by Source

Budgeted and Historical 2025 Revenues by Source

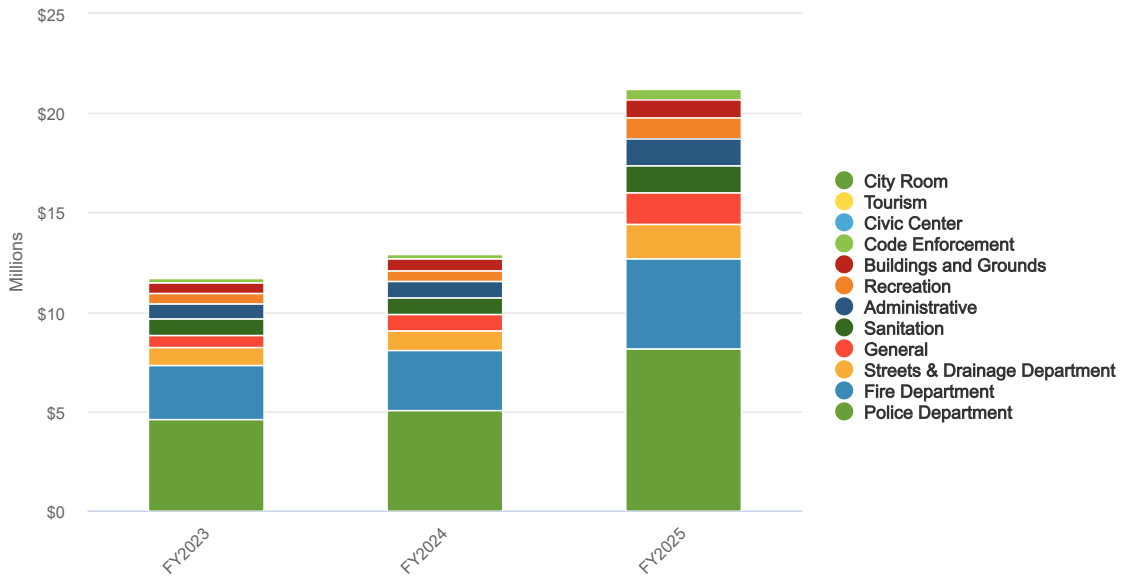


Name	FY2023 Actuals	FY2024 Original Budget	FY2024 Projected Actual	FY2024 Amended Budget	FY2025 Original Budget	FY2024 Amended Budget vs. FY2025 Original Budget (% Change)
Revenue Source						
Taxes	\$15,042,044	\$14,651,000	\$15,537,749	\$14,651,000	\$15,329,000	4.6%
Permits, Fees & Licenses	\$1,977,114	\$1,748,500	\$1,240,403	\$1,748,500	\$1,737,500	-0.6%
Franchise Fees	\$1,440,316	\$1,251,500	\$1,012,178	\$1,251,500	\$1,252,000	0%
Interest Income	\$192,287	\$102,000	\$94,749	\$102,000	\$102,000	0%
State Contracts	\$14,940	\$14,940	\$22,410	\$14,940	\$14,940	0%
Fire Dept Revenue	\$1,461,417	\$1,451,000	\$1,671,959	\$1,451,000	\$1,516,000	4.5%
Miscellaneous Income	\$235,434	\$186,100	\$190,154	\$186,100	\$201,100	8.1%
Grant Income	\$1,047,069	\$971,127	\$1,417,504	\$971,127	\$1,148,744	18.3%
Rental Revenue	\$178,807	\$153,800	\$132,211	\$153,800	\$150,800	-2%
Total Revenue Source:	\$21,589,427	\$20,529,967	\$21,319,316	\$20,529,967	\$21,452,084	4.5%



Expenditures by Function

Budgeted and Historical Expenditures by Function



Name	FY2023 Actuals	FY2024 Original Budget	FY2024 Projected Actual	FY2024 Amended Budget	FY2025 Original Budget	FY2024 Amended Budget vs. FY2025 Original Budget (% Change)
Expenditures						
Fire Department						
Payroll						
SALARIES	\$2,046,029	\$2,065,500	\$2,194,282	\$2,065,500	\$2,147,000	3.9%
PART-TIME LABOR - FIRE	\$68,104	\$190,000	\$24,635	\$190,000	\$190,000	0%
OVERTIME	\$288,596	\$225,000	\$406,227	\$225,000	\$225,000	0%
RETIREMENT	\$547,537	\$595,000	\$545,961	\$595,000	\$608,000	2.2%
MEDICARE TAX	\$49,517	\$53,000	\$44,651	\$53,000	\$54,000	1.9%
WORKERS COMP INSURANCE	\$224,632	\$148,000	\$119,286	\$148,000	\$165,000	11.5%
HEALTH INSURANCE	\$370,126	\$360,000	\$337,202	\$360,000	\$410,000	13.9%
Total Payroll:	\$3,594,541	\$3,636,500	\$3,672,244	\$3,636,500	\$3,799,000	4.5%
Supplies & Maintenance						
GAS & OIL	\$45,154	\$60,000	\$45,859	\$60,000	\$60,000	0%
SUPPLIES & MAINTENANCE	\$58,771	\$65,000	\$79,816	\$65,000	\$70,000	7.7%
EMS SUPPLIES	\$87,396	\$100,000	\$107,906	\$100,000	\$110,000	10%
UNIFORMS	\$11,172	\$50,000	\$38,377	\$50,000	\$65,000	30%
EMS FEES	\$20,712	\$55,000	\$42,631	\$55,000	\$55,000	0%
DRUG TESTING/PHYSICALS-FI	\$1,440	\$10,000	\$1,853	\$10,000	\$10,000	0%



Name	FY2023 Actuals	FY2024 Original Budget	FY2024 Projected Actual	FY2024 Amended Budget	FY2025 Original Budget	FY2024 Amended Budget vs. FY2025 Original Budget (% Change)
VEHICLE MAINTENANCE	\$57,321	\$75,000	\$111,416	\$75,000	\$90,000	20%
Total Supplies & Maintenance:	\$281,966	\$415,000	\$427,857	\$415,000	\$460,000	10.8%
Utilities						
UTILITIES	\$45,095	\$60,000	\$29,935	\$60,000	\$60,000	0%
Total Utilities:	\$45,095	\$60,000	\$29,935	\$60,000	\$60,000	0%
Insurance						
GENERAL INSURANCE	\$15,500	\$18,500	\$28,162	\$18,500	\$19,425	5%
LIABILITY INSURANCE	\$67,061	\$75,000	\$74,279	\$75,000	\$78,750	5%
PROPERTY INSURANCE	\$10,300	\$25,000	\$22,738	\$25,000	\$26,250	5%
Total Insurance:	\$92,860	\$118,500	\$125,178	\$118,500	\$124,425	5%
Education						
EDUCATION	\$40,142	\$28,000	\$19,305	\$28,000	\$35,000	25%
Total Education:	\$40,142	\$28,000	\$19,305	\$28,000	\$35,000	25%
Data Processing						
DATA PROCESSING - FIRE	\$48,102	\$50,000	\$27,533	\$50,000	\$50,000	0%
Total Data Processing:	\$48,102	\$50,000	\$27,533	\$50,000	\$50,000	0%
Community Development						
FIRE PREVENTION EDUCATION	\$2,991	\$5,000	\$37	\$5,000	\$5,000	0%
Total Community Development:	\$2,991	\$5,000	\$37	\$5,000	\$5,000	0%
Total Fire Department:	\$4,105,697	\$4,313,000	\$4,302,090	\$4,313,000	\$4,533,425	5.1%
Administrative						
Payroll						
SALARIES	\$621,680	\$670,000	\$660,435	\$670,000	\$739,000	10.3%
PART-TIME LABOR - ADMIN	\$34,414	\$40,000	\$27,875	\$40,000	\$10,000	-75%
OVERTIME	\$7,385	\$5,000	\$7,704	\$5,000	\$8,000	60%
RETIREMENT	\$179,170	\$199,500	\$184,829	\$199,500	\$209,000	4.8%
MEDICARE TAX	\$10,651	\$13,000	\$8,897	\$13,000	\$11,000	-15.4%
WORKERS COMP INSURANCE	\$1,534	\$5,000	\$3,099	\$5,000	\$5,500	10%
HEALTH INSURANCE	\$97,518	\$80,000	\$86,435	\$80,000	\$93,000	16.3%
Total Payroll:	\$952,353	\$1,012,500	\$979,274	\$1,012,500	\$1,075,500	6.2%
Supplies & Maintenance						
SUPPLIES & MAINTENANCE	\$21,017	\$20,000	\$33,427	\$20,000	\$25,000	25%



Name	FY2023 Actuals	FY2024 Original Budget	FY2024 Projected Actual	FY2024 Amended Budget	FY2025 Original Budget	FY2024 Amended Budget vs. FY2025 Original Budget (% Change)
UNIFORMS	\$10,814	\$8,500	\$2,018	\$8,500	\$9,000	5.9%
Total Supplies & Maintenance:	\$31,831	\$28,500	\$35,445	\$28,500	\$34,000	19.3%
Insurance						
LIABILITY INSURANCE	\$16,742	\$27,000	\$18,544	\$27,000	\$28,350	5%
PROPERTY INSURANCE	\$2,551	\$10,000	\$17,628	\$10,000	\$10,500	5%
Total Insurance:	\$19,293	\$37,000	\$36,172	\$37,000	\$38,850	5%
Education						
EDUCATION	\$8,000	\$12,500	\$9,202	\$12,500	\$14,000	12%
Total Education:	\$8,000	\$12,500	\$9,202	\$12,500	\$14,000	12%
Data Processing						
SOFTWARE/HARDWARE - ADMIN	\$24,035	\$25,000	\$46,386	\$25,000	\$35,000	40%
DATA PROCESSING - ADMIN	\$49,753	\$95,000	\$89,750	\$95,000	\$95,000	0%
BILLING - GF	\$2,852	\$7,000	\$13,754	\$7,000	\$10,000	42.9%
Total Data Processing:	\$76,640	\$127,000	\$149,890	\$127,000	\$140,000	10.2%
Total Administrative:	\$1,088,117	\$1,217,500	\$1,209,983	\$1,217,500	\$1,302,350	7%
Police Department						
Payroll						
SALARIES	\$3,897,027	\$4,404,000	\$4,259,498	\$4,404,000	\$4,433,000	0.7%
PART-TIME LABOR - POLICE	\$91,235	\$105,000	\$99,653	\$105,000	\$105,000	0%
OVERTIME	\$329,579	\$285,000	\$485,310	\$285,000	\$285,000	0%
RETIREMENT	\$1,055,978	\$1,337,000	\$961,518	\$1,337,000	\$1,339,000	0.1%
MEDICARE/FICA TAX	\$76,148	\$75,000	\$89,870	\$75,000	\$80,000	6.7%
WORKERS COMP INSURANCE	\$106,433	\$218,500	\$214,945	\$218,500	\$218,500	0%
HEALTH INSURANCE	\$633,325	\$580,000	\$551,023	\$580,000	\$660,000	13.8%
Total Payroll:	\$6,189,724	\$7,004,500	\$6,661,819	\$7,004,500	\$7,120,500	1.7%
Legal & Professional						
DISTRICT ATTORNEY EXPENSE	\$0	\$25,000	\$25,999	\$25,000	\$25,000	0%
Total Legal & Professional:	\$0	\$25,000	\$25,999	\$25,000	\$25,000	0%
Supplies & Maintenance						
GAS & OIL	\$167,252	\$180,000	\$162,284	\$180,000	\$180,000	0%
SUPPLIES & MAINTENANCE	\$107,624	\$127,000	\$122,461	\$127,000	\$127,000	0%
UNIFORMS	\$31,964	\$34,000	\$39,156	\$34,000	\$37,500	10.3%
VEHICLE MAINTENANCE	\$42,863	\$45,000	\$44,359	\$45,000	\$45,000	0%



Name	FY2023 Actuals	FY2024 Original Budget	FY2024 Projected Actual	FY2024 Amended Budget	FY2025 Original Budget	FY2024 Amended Budget vs. FY2025 Original Budget (% Change)
AMMUNITION	\$47,551	\$37,000	\$38,252	\$37,000	\$37,000	0%
PD Evidence/Property Room	\$963		\$547	\$0	\$0	0%
Total Supplies & Maintenance:	\$398,218	\$423,000	\$407,059	\$423,000	\$426,500	0.8%
Utilities						
UTILITIES	\$183,990	\$180,000	\$158,973	\$180,000	\$190,000	5.6%
Total Utilities:	\$183,990	\$180,000	\$158,973	\$180,000	\$190,000	5.6%
Insurance						
LIABILITY INSURANCE	\$112,838	\$122,000	\$124,983	\$122,000	\$128,100	5%
PROPERTY INSURANCE	\$20,596	\$60,000	\$58,153	\$60,000	\$63,000	5%
Total Insurance:	\$133,435	\$182,000	\$183,136	\$182,000	\$191,100	5%
Education						
EDUCATION	\$50,467	\$50,000	\$60,066	\$50,000	\$60,000	20%
Total Education:	\$50,467	\$50,000	\$60,066	\$50,000	\$60,000	20%
Data Processing						
DATA PROCESSING - POLICE	\$157,958	\$167,000	\$145,907	\$167,000	\$173,400	3.8%
Total Data Processing:	\$157,958	\$167,000	\$145,907	\$167,000	\$173,400	3.8%
Community Development						
JUNIOR POLICE	\$2,295	\$3,000	\$262	\$3,000	\$3,000	0%
Total Community Development:	\$2,295	\$3,000	\$262	\$3,000	\$3,000	0%
Total Police Department:	\$7,116,087	\$8,034,500	\$7,643,223	\$8,034,500	\$8,189,500	1.9%
Code Enforcement						
Payroll						
SALARIES	\$220,550	\$272,000	\$248,331	\$272,000	\$278,000	2.2%
OVERTIME	\$1,477	\$6,000	\$174	\$6,000	\$6,000	0%
RETIREMENT	\$61,674	\$81,000	\$69,691	\$81,000	\$79,000	-2.5%
MEDICARE TAX	\$2,768	\$3,700	\$2,589	\$3,700	\$4,000	8.1%
WORKERS COMP INSURANCE	\$7,982	\$19,000	\$16,120	\$19,000	\$19,500	2.6%
HEALTH INSURANCE	\$21,584	\$25,000	\$19,022	\$25,000	\$42,000	68%
Total Payroll:	\$316,035	\$406,700	\$355,927	\$406,700	\$428,500	5.4%
Supplies & Maintenance						
SUPPLIES & MAINTENANCE	\$8,290	\$15,000	\$7,489	\$15,000	\$15,000	0%
UNIFORMS	\$612	\$3,500	\$630	\$3,500	\$3,500	0%



Name	FY2023 Actuals	FY2024 Original Budget	FY2024 Projected Actual	FY2024 Amended Budget	FY2025 Original Budget	FY2024 Amended Budget vs. FY2025 Original Budget (% Change)
VEHICLE MAINTENANCE	\$316	\$5,000	\$962	\$5,000	\$5,000	0%
CLEAN CITY PROJECT	\$33,019	\$50,000	\$0	\$50,000	\$50,000	0%
Total Supplies & Maintenance:	\$42,237	\$73,500	\$9,081	\$73,500	\$73,500	0%
Utilities						
UTILITIES	\$10,064	\$18,000	\$13,709	\$18,000	\$18,000	0%
Total Utilities:	\$10,064	\$18,000	\$13,709	\$18,000	\$18,000	0%
Insurance						
LIABILITY INSURANCE	\$7,940	\$9,500	\$8,795	\$9,500	\$9,975	5%
PROPERTY INSURANCE	\$1,143	\$2,000	\$0	\$2,000	\$2,100	5%
Total Insurance:	\$9,083	\$11,500	\$8,795	\$11,500	\$12,075	5%
Education						
EDUCATION	\$6,734	\$11,000	\$3,127	\$11,000	\$11,000	0%
Total Education:	\$6,734	\$11,000	\$3,127	\$11,000	\$11,000	0%
Total Code Enforcement:	\$384,153	\$520,700	\$390,640	\$520,700	\$543,075	4.3%
Sanitation						
Payroll						
SALARIES	\$93,445	\$98,000	\$100,783	\$98,000	\$102,000	4.1%
OVERTIME	\$473	\$2,000	\$793	\$2,000	\$2,000	0%
RETIREMENT	\$27,086	\$29,500	\$27,930	\$29,500	\$29,000	-1.7%
MEDICARE TAX	\$1,223	\$1,300	\$1,087	\$1,300	\$1,300	0%
WORKERS COMP INSURANCE	\$4,345	\$8,000	\$8,775	\$8,000	\$9,000	12.5%
HEALTH INSURANCE	\$7,386	\$7,000	\$6,889	\$7,000	\$7,500	7.1%
Total Payroll:	\$133,958	\$145,800	\$146,257	\$145,800	\$150,800	3.4%
Supplies & Maintenance						
UNIFORMS	\$1,087	\$2,000	\$1,183	\$2,000	\$2,000	0%
VEHICLE MAINTENANCE	\$6,491	\$10,000	\$1,087	\$10,000	\$10,000	0%
Total Supplies & Maintenance:	\$7,579	\$12,000	\$2,270	\$12,000	\$12,000	0%
Insurance						
LIABILITY INSURANCE	\$19,181	\$23,000	\$21,245	\$23,000	\$24,150	5%
PROPERTY INSURANCE	\$16,113	\$9,000	\$0	\$9,000	\$9,450	5%
Total Insurance:	\$35,294	\$32,000	\$21,245	\$32,000	\$33,600	5%
Contracts						
LANDFILL CONTRACT	\$1,110,702	\$1,115,000	\$1,124,018	\$1,115,000	\$1,180,000	5.8%
Total Contracts:	\$1,110,702	\$1,115,000	\$1,124,018	\$1,115,000	\$1,180,000	5.8%
Total Sanitation:	\$1,287,532	\$1,304,800	\$1,293,789	\$1,304,800	\$1,376,400	5.5%



Name	FY2023 Actuals	FY2024 Original Budget	FY2024 Projected Actual	FY2024 Amended Budget	FY2025 Original Budget	FY2024 Amended Budget vs. FY2025 Original Budget (% Change)
Streets & Drainage Department						
Payroll						
SALARIES	\$662,393	\$768,000	\$671,780	\$768,000	\$782,000	1.8%
OVERTIME	\$1,912	\$7,000	\$3,486	\$7,000	\$7,000	0%
RETIREMENT	\$184,322	\$214,500	\$178,471	\$214,500	\$208,000	-3%
MEDICARE TAX	\$11,021	\$13,500	\$9,095	\$13,500	\$13,500	0%
WORKERS COMP INSURANCE	\$33,351	\$62,500	\$67,353	\$62,500	\$65,000	4%
HEALTH INSURANCE	\$90,336	\$100,000	\$82,544	\$100,000	\$128,000	28%
Total Payroll:	\$983,335	\$1,165,500	\$1,012,730	\$1,165,500	\$1,203,500	3.3%
Supplies & Maintenance						
SUPPLIES & MAINTENANCE	\$65,149	\$95,000	\$121,523	\$95,000	\$95,000	0%
STORMWATER MANAGEMENT	-\$3,046	\$4,000	\$6,985	\$4,000	\$5,000	25%
UNIFORMS	\$12,103	\$13,000	\$13,883	\$13,000	\$14,000	7.7%
VEHICLE MAINTENANCE	\$45,612	\$70,000	\$104,582	\$70,000	\$70,000	0%
RIGHT-OF-WAY CLEARING	\$32,645	\$35,000	\$50,821	\$35,000	\$40,000	14.3%
Total Supplies & Maintenance:	\$152,462	\$217,000	\$297,794	\$217,000	\$224,000	3.2%
Utilities						
UTILITIES/STREET LIGHTING	\$238,672	\$230,000	\$184,232	\$230,000	\$250,000	8.7%
Total Utilities:	\$238,672	\$230,000	\$184,232	\$230,000	\$250,000	8.7%
Insurance						
LIABILITY INSURANCE	\$27,677	\$33,000	\$30,656	\$33,000	\$34,650	5%
PROPERTY INSURANCE	\$12,221	\$14,100	\$4,808	\$14,100	\$14,805	5%
Total Insurance:	\$39,898	\$47,100	\$35,463	\$47,100	\$49,455	5%
Total Streets & Drainage Department:	\$1,414,367	\$1,659,600	\$1,530,220	\$1,659,600	\$1,726,955	4.1%
General						
Payroll						
SALARIES	\$173,097	\$173,500	\$168,370	\$173,500	\$170,000	-2%
SALARIES CIVIL SVC SECRETARY	\$2,500	\$0	\$0	\$0	\$0	0%
RETIREMENT	\$38,539	\$42,500	\$36,523	\$42,500	\$42,000	-1.2%
UNEMPLOYMENT COMPENSATION	\$0	\$15,000	\$0	\$15,000	\$15,000	0%
MEDICARE TAX	\$3,574	\$5,000	\$3,016	\$5,000	\$5,000	0%
LASERS RETIREMENT EXPENSE	\$3,105	\$3,200	\$3,162	\$3,200	\$3,500	9.4%



Name	FY2023 Actuals	FY2024 Original Budget	FY2024 Projected Actual	FY2024 Amended Budget	FY2025 Original Budget	FY2024 Amended Budget vs. FY2025 Original Budget (% Change)
WORKERS COMP INSURANCE	\$466	\$1,300	\$941	\$1,300	\$1,300	0%
HEALTH INSURANCE	\$135,018	\$125,000	\$108,511	\$125,000	\$129,000	3.2%
Total Payroll:	\$356,299	\$365,500	\$320,523	\$365,500	\$365,800	0.1%
Legal & Professional						
LEGAL FEES	\$21,858	\$45,000	\$24,269	\$45,000	\$45,000	0%
ACCOUNTING & AUDIT FEES	\$28,850	\$40,000	\$57,638	\$40,000	\$45,000	12.5%
ENGINEERING FEES	\$11,427	\$50,000	\$20,876	\$50,000	\$50,000	0%
CONSULTING FEES	\$105,854	\$127,500	\$76,787	\$127,500	\$150,000	17.6%
Total Legal & Professional:	\$167,989	\$262,500	\$179,570	\$262,500	\$290,000	10.5%
Supplies & Maintenance						
GAS & OIL	\$81,781	\$110,000	\$83,506	\$110,000	\$100,000	-9.1%
SUPPLIES & MAINTENANCE	\$108,561	\$75,000	\$107,020	\$75,000	\$85,000	13.3%
VEHICLE MAINTENANCE	\$8,994	\$4,000	\$2,059	\$4,000	\$4,000	0%
GENERATOR MAINTENANCE	\$3,665	\$20,000	\$0	\$20,000	\$20,000	0%
DRUG SCREENING	\$11,088	\$8,000	\$14,584	\$8,000	\$15,000	87.5%
Total Supplies & Maintenance:	\$214,089	\$217,000	\$207,168	\$217,000	\$224,000	3.2%
Utilities						
UTILITIES	\$55,987	\$60,000	\$56,654	\$60,000	\$65,000	8.3%
Total Utilities:	\$55,987	\$60,000	\$56,654	\$60,000	\$65,000	8.3%
Insurance						
GENERAL INSURANCE	\$0	\$19,000	\$0	\$19,000	\$19,950	5%
LIABILITY INSURANCE	\$21,807	\$27,000	\$24,730	\$27,000	\$28,350	5%
PROPERTY INSURANCE	\$9,799	\$28,000	-\$2,638	\$28,000	\$29,400	5%
Total Insurance:	\$31,606	\$74,000	\$22,091	\$74,000	\$77,700	5%
Education						
EDUCATION	\$23,257	\$20,000	\$7,775	\$20,000	\$20,000	0%
SAFETY PROGRAM	\$0	\$2,000	\$0	\$2,000	\$2,000	0%
Total Education:	\$23,257	\$22,000	\$7,775	\$22,000	\$22,000	0%
Public Printing						
PUBLIC PRINTING	\$18,723	\$24,000	\$31,336	\$24,000	\$28,000	16.7%
Total Public Printing:	\$18,723	\$24,000	\$31,336	\$24,000	\$28,000	16.7%
Animal / Mosquito Control						



Name	FY2023 Actuals	FY2024 Original Budget	FY2024 Projected Actual	FY2024 Amended Budget	FY2025 Original Budget	FY2024 Amended Budget vs. FY2025 Original Budget (% Change)
ANIMAL CONTROL CONTRACT	\$0	\$5,000	\$0	\$5,000	\$5,000	0%
Total Animal / Mosquito Control:	\$0	\$5,000	\$0	\$5,000	\$5,000	0%
Community Development						
COMMUNITY DEVELOPMENT	\$10,644	\$50,000	\$23,721	\$50,000	\$65,000	30%
ASCENSION COMMUNITY THEATRE	\$10,000	\$10,000	\$0	\$10,000	\$10,000	0%
ASCENSION ECONOMIC DEV. C	\$100,000	\$100,000	\$112,500	\$100,000	\$100,000	0%
ASCENSION BALLOON FESTIVAL	\$0	\$10,000	\$0	\$10,000	\$0	-100%
MAYOR'S PRAYER BREAKFAST	\$4,140	\$7,500	\$7,459	\$7,500	\$7,500	0%
JAMBALAYA FESTIVAL ASSOCI	\$30,000	\$30,000	\$0	\$30,000	\$50,000	66.7%
PACE Visitor's Enterprise Fund Allocation	\$0		\$50,000	\$0	\$50,000	N/A
GRASS CUTTING	\$26,368	\$22,000	\$104,950	\$22,000	\$79,000	259.1%
Total Community Development:	\$181,152	\$229,500	\$298,630	\$229,500	\$361,500	57.5%
Capital Expense						
EMERGENCIES & CONTINGENCIES	\$4,150	\$130,000	\$30,094	\$130,000	\$130,000	0%
Total Capital Expense:	\$4,150	\$130,000	\$30,094	\$130,000	\$130,000	0%
Total General:	\$1,053,252	\$1,389,500	\$1,153,841	\$1,389,500	\$1,569,000	12.9%
Civic Center						
Supplies & Maintenance						
SUPPLIES & MAINTENANCE*CV	\$37,431	\$30,000	\$44,552	\$30,000	\$35,000	16.7%
Total Supplies & Maintenance:	\$37,431	\$30,000	\$44,552	\$30,000	\$35,000	16.7%
Utilities						
UTILITIES	\$652	\$5,000	\$1,438	\$5,000	\$5,000	0%
Total Utilities:	\$652	\$5,000	\$1,438	\$5,000	\$5,000	0%
Insurance						
GENERAL INSURANCE	\$0	\$23,000	\$0	\$23,000	\$24,150	5%
LIABILITY INSURANCE	\$826	\$2,000	\$915	\$2,000	\$2,100	5%
PROPERTY INSURANCE	\$5,310	\$20,000	\$29,664	\$20,000	\$21,000	5%
Total Insurance:	\$6,136	\$45,000	\$30,579	\$45,000	\$47,250	5%
Total Civic Center:	\$44,219	\$80,000	\$76,570	\$80,000	\$87,250	9.1%



Name	FY2023 Actuals	FY2024 Original Budget	FY2024 Projected Actual	FY2024 Amended Budget	FY2025 Original Budget	FY2024 Amended Budget vs. FY2025 Original Budget (% Change)
City Room						
Supplies & Maintenance						
SUPPLIES & MAINTENANCE	\$22,764	\$25,000	\$25,529	\$25,000	\$25,000	0%
Total Supplies & Maintenance:	\$22,764	\$25,000	\$25,529	\$25,000	\$25,000	0%
Utilities						
UTILITIES	\$14	\$500	\$0	\$500	\$500	0%
Total Utilities:	\$14	\$500	\$0	\$500	\$500	0%
Insurance						
LIABILITY INSURANCE	\$480	\$1,000	\$532	\$1,000	\$1,050	5%
PROPERTY INSURANCE	\$1,759	\$2,900	\$3,358	\$2,900	\$3,045	5%
Total Insurance:	\$2,239	\$3,900	\$3,890	\$3,900	\$4,095	5%
Total City Room:	\$25,017	\$29,400	\$29,419	\$29,400	\$29,595	0.7%
Recreation						
Payroll						
SALARIES	\$217,321	\$232,000	\$236,492	\$232,000	\$304,000	31%
OVERTIME	\$2,633	\$12,000	\$1,636	\$12,000	\$12,000	0%
SALARIES BASEBALL	\$24,149	\$29,000	\$13,946	\$29,000	\$29,000	0%
SALARIES BASKETBALL	\$27,980	\$24,000	\$15,967	\$24,000	\$24,000	0%
RETIREMENT	\$51,274	\$56,000	\$53,927	\$56,000	\$65,000	16.1%
MEDICARE TAX	\$9,548	\$10,000	\$5,678	\$10,000	\$10,000	0%
WORKERS COMP INSURANCE	\$5,489	\$11,500	\$10,395	\$11,500	\$14,500	26.1%
HEALTH INSURANCE	\$25,271	\$25,000	\$20,943	\$25,000	\$29,000	16%
Total Payroll:	\$363,664	\$399,500	\$358,984	\$399,500	\$487,500	22%
Supplies & Maintenance						
SUPPLIES & MAINTENANCE	\$138,494	\$160,000	\$94,937	\$160,000	\$150,000	-6.2%
UNIFORMS	\$3,689	\$4,000	\$4,064	\$4,000	\$4,000	0%
VEHICLE MAINTENANCE	\$1,184	\$6,000	\$32,259	\$6,000	\$6,000	0%
Total Supplies & Maintenance:	\$143,367	\$170,000	\$131,260	\$170,000	\$160,000	-5.9%
Utilities						
UTILITIES	\$88,441	\$72,000	\$70,429	\$72,000	\$95,000	31.9%
Total Utilities:	\$88,441	\$72,000	\$70,429	\$72,000	\$95,000	31.9%
Insurance						
LIABILITY INSURANCE	\$11,619	\$17,000	\$12,869	\$17,000	\$17,850	5%
PROPERTY INSURANCE	\$8,889	\$9,000	\$12,694	\$9,000	\$9,450	5%
Total Insurance:	\$20,508	\$26,000	\$25,563	\$26,000	\$27,300	5%



Name	FY2023 Actuals	FY2024 Original Budget	FY2024 Projected Actual	FY2024 Amended Budget	FY2025 Original Budget	FY2024 Amended Budget vs. FY2025 Original Budget (% Change)
Education						
EDUCATION	\$1,442	\$2,000	\$38	\$2,000	\$2,000	0%
Total Education:	\$1,442	\$2,000	\$38	\$2,000	\$2,000	0%
Community Development						
SENIOR CITIZENS	\$11,003	\$10,000	\$10,581	\$10,000	\$12,000	20%
Total Community Development:	\$11,003	\$10,000	\$10,581	\$10,000	\$12,000	20%
Sports Programs						
SPRING SPORTS	\$36,358	\$60,000	\$13,811	\$60,000	\$60,000	0%
T-BALL EXPENSE	\$0		-\$150	\$0	\$0	0%
RECREATION CONCESSION PUR	\$8,910	\$15,000	\$5,114	\$15,000	\$15,000	0%
BASKETBALL	\$7,283	\$10,500	\$14,055	\$10,500	\$12,000	14.3%
FALL BASEBALL EXPENSE	\$0	\$7,000	\$4,804	\$7,000	\$7,000	0%
ALL ABILITIES FIELD	\$4,202	\$7,000	\$0	\$7,000	\$7,000	0%
ATHLETIC FIELD MAINTENANCE	\$71,254	\$72,798	\$73,512	\$72,798	\$74,254	2%
RECREATION LEAGUE MANAGEM	\$89,523	\$93,126	\$94,039	\$93,126	\$94,989	2%
Total Sports Programs:	\$217,529	\$265,424	\$205,185	\$265,424	\$270,243	1.8%
Total Recreation:	\$845,954	\$944,924	\$802,039	\$944,924	\$1,054,043	11.5%
Buildings and Grounds						
Payroll						
SALARIES	\$401,478	\$426,000	\$421,110	\$426,000	\$427,000	0.2%
OVERTIME	\$12,048	\$10,000	\$16,252	\$10,000	\$12,000	20%
RETIREMENT	\$114,514	\$127,000	\$113,926	\$127,000	\$121,000	-4.7%
MEDICARE/FICA	\$5,077	\$7,500	\$4,556	\$7,500	\$7,500	0%
WORKERS COMP INSURANCE	\$10,823	\$21,000	\$21,858	\$21,000	\$22,000	4.8%
HEALTH INSURANCE	\$78,314	\$70,000	\$62,365	\$70,000	\$77,000	10%
Total Payroll:	\$622,254	\$661,500	\$640,068	\$661,500	\$666,500	0.8%
Supplies & Maintenance						
SUPPLIES & MAINTENANCE	\$75,898	\$85,000	\$82,966	\$85,000	\$100,000	17.6%
SUPPLIES & MAINT - JAMB. PARK	\$22,786	\$45,000	\$29,235	\$45,000	\$45,000	0%
UNIFORMS	\$3,780	\$5,000	\$4,712	\$5,000	\$5,000	0%
VEHICLE MAINTENANCE	\$8,057	\$6,000	\$1,418	\$6,000	\$6,000	0%
Total Supplies & Maintenance:	\$110,521	\$141,000	\$118,330	\$141,000	\$156,000	10.6%

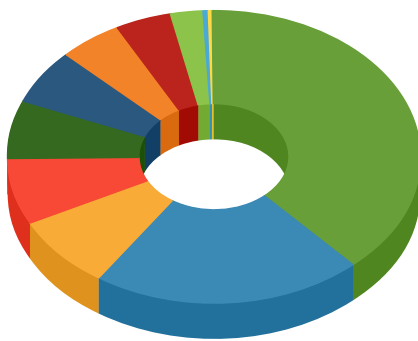


Name	FY2023 Actuals	FY2024 Original Budget	FY2024 Projected Actual	FY2024 Amended Budget	FY2025 Original Budget	FY2024 Amended Budget vs. FY2025 Original Budget (% Change)
Utilities						
UTILITIES	\$55,455	\$62,000	\$49,114	\$62,000	\$62,000	0%
Total Utilities:	\$55,455	\$62,000	\$49,114	\$62,000	\$62,000	0%
Insurance						
LIABILITY INSURANCE	\$16,587	\$18,000	\$18,372	\$18,000	\$18,900	5%
PROPERTY INSURANCE	\$2,238	\$9,000	\$14,101	\$9,000	\$9,450	5%
Total Insurance:	\$18,824	\$27,000	\$32,473	\$27,000	\$28,350	5%
Sports Programs						
SWIMMING POOL EXPENSE	\$6,023	\$25,000	\$14,353	\$25,000	\$25,000	0%
Total Sports Programs:	\$6,023	\$25,000	\$14,353	\$25,000	\$25,000	0%
Total Buildings and Grounds:	\$813,076	\$916,500	\$854,338	\$916,500	\$937,850	2.3%
Tourism						
Supplies & Maintenance						
SUPPLIES & MAINTENANCE	\$14,478	\$10,000	\$10,699	\$10,000	\$10,000	0%
Total Supplies & Maintenance:	\$14,478	\$10,000	\$10,699	\$10,000	\$10,000	0%
Utilities						
UTILITIES	\$3,583	\$3,000	\$3,218	\$3,000	\$4,000	33.3%
Total Utilities:	\$3,583	\$3,000	\$3,218	\$3,000	\$4,000	33.3%
Insurance						
LIABILITY INSURANCE	\$1,046	\$1,200	\$1,159	\$1,200	\$1,260	5%
PROPERTY INSURANCE	\$0	\$1,700	\$2,899	\$1,700	\$1,785	5%
Total Insurance:	\$1,046	\$2,900	\$4,058	\$2,900	\$3,045	5%
Contracts						
TANGER TOURIST INFO CENTER	\$15,000	\$15,000	\$15,000	\$15,000	\$15,000	0%
Total Contracts:	\$15,000	\$15,000	\$15,000	\$15,000	\$15,000	0%
Community Development						
CHRISTMAS TREE LIGHTING	\$15,577	\$12,000	\$8,184	\$12,000	\$12,000	0%
COMMITTEE ON CULTURAL AFF	\$14,068	\$20,000	\$5,334	\$20,000	\$20,000	0%
Total Community Development:	\$29,646	\$32,000	\$13,518	\$32,000	\$32,000	0%
Total Tourism:	\$63,753	\$62,900	\$46,492	\$62,900	\$64,045	1.8%
Total Expenditures:	\$18,241,224	\$20,473,324	\$19,332,644	\$20,473,324	\$21,413,488	4.6%



Fiscal Year 2024 Expenditures

General Fund Operating Budget by Department



- Police Department (Budgeted) \$8,189,500 (38.25%)
- Fire Department (Budgeted) \$4,533,425 (21.18%)
- Streets & Drainage Department (Budgeted) \$1,726,955 (8.07%)
- General (Budgeted) \$1,564,000 (7.31%)
- Sanitation (Budgeted) \$1,376,400 (6.43%)
- Administrative (Budgeted) \$1,302,350 (6.08%)
- Recreation (Budgeted) \$1,054,043 (4.92%)
- Buildings and Grounds (Budgeted) \$937,850 (4.38%)
- Code Enforcement (Budgeted) \$543,075 (2.54%)
- Civic Center (Budgeted) \$87,250 (0.41%)
- Tourism (Budgeted) \$64,045 (0.30%)
- City Room (Budgeted) \$29,595 (0.14%)

Revenues by Source

Name	FY2023 Actuals	FY2024 Original Budget	FY2024 Projected Actual	FY2024 Amended Budget	FY2025 Original Budget	FY2024 Amended Budget vs. FY2025 Original Budget (% Change)
Revenue Source						
Taxes						
SINKING FUND SALES TAX RE	\$936,724	\$903,760	\$958,614	\$903,760	\$949,000	5%
Total Taxes:	\$936,724	\$903,760	\$958,614	\$903,760	\$949,000	5%
Permits, Fees & Licenses						
INSTALLATION FEES	\$192,133	\$150,000	\$174,157	\$150,000	\$175,000	16.7%
NSF CHECK FEES/UF	\$2,225	\$2,000	\$1,463	\$2,000	\$2,000	0%
Total Permits, Fees & Licenses:	\$194,358	\$152,000	\$175,620	\$152,000	\$177,000	16.4%
Utility Revenue						
RESIDENTIAL GAS SALES	\$888,506	\$800,000	\$745,755	\$800,000	\$800,000	0%
COMMERCIAL GAS SALES	\$1,343,998	\$1,045,000	\$1,083,434	\$1,045,000	\$1,085,000	3.8%
RESIDENTIAL WATER SALES	\$1,030,364	\$920,000	\$1,119,280	\$920,000	\$1,010,000	9.8%
COMMERCIAL WATER SALES	\$792,920	\$757,125	\$921,926	\$757,125	\$758,000	0.1%
WATER METER TECHNOLOGY FEE	\$326,931	\$325,000	\$349,052	\$325,000	\$325,000	0%
RESIDENTIAL SEWER SALES	\$1,594,931	\$1,220,000	\$1,771,131	\$1,220,000	\$1,220,000	0%
COMMERCIAL SEWER SALES	\$980,637	\$810,000	\$1,147,377	\$810,000	\$810,000	0%
PENALTY REVENUE	\$114,296	\$60,000	\$133,315	\$60,000	\$60,000	0%
RECONNECT FEES	\$53,450	\$40,000	\$101,925	\$40,000	\$40,000	0%
Transfer from Capital Out	\$3,137,551		\$0	\$0	\$0	0%
Total Utility Revenue:	\$10,263,584	\$5,977,125	\$7,373,195	\$5,977,125	\$6,108,000	2.2%
Interest Income						
INTEREST EARNED	\$56,454	\$6,000	\$91,876	\$6,000	\$6,000	0%
INSURANCE REIMBURSEMENTS	\$3,144		\$0	\$0	\$0	0%
Total Interest Income:	\$59,598	\$6,000	\$91,876	\$6,000	\$6,000	0%
Miscellaneous Income						
GAIN ON SALE OF ASSET	\$7,661		\$0	\$0	\$0	0%
Total Miscellaneous Income:	\$7,661		\$0	\$0	\$0	0%

Name	FY2023 Actuals	FY2024 Original Budget	FY2024 Projected Actual	FY2024 Amended Budget	FY2025 Original Budget	FY2024 Amended Budget vs. FY2025 Original Budget (% Change)
Total Revenue Source:	\$11,461,926	\$7,038,885	\$8,599,304	\$7,038,885	\$7,240,000	2.9%

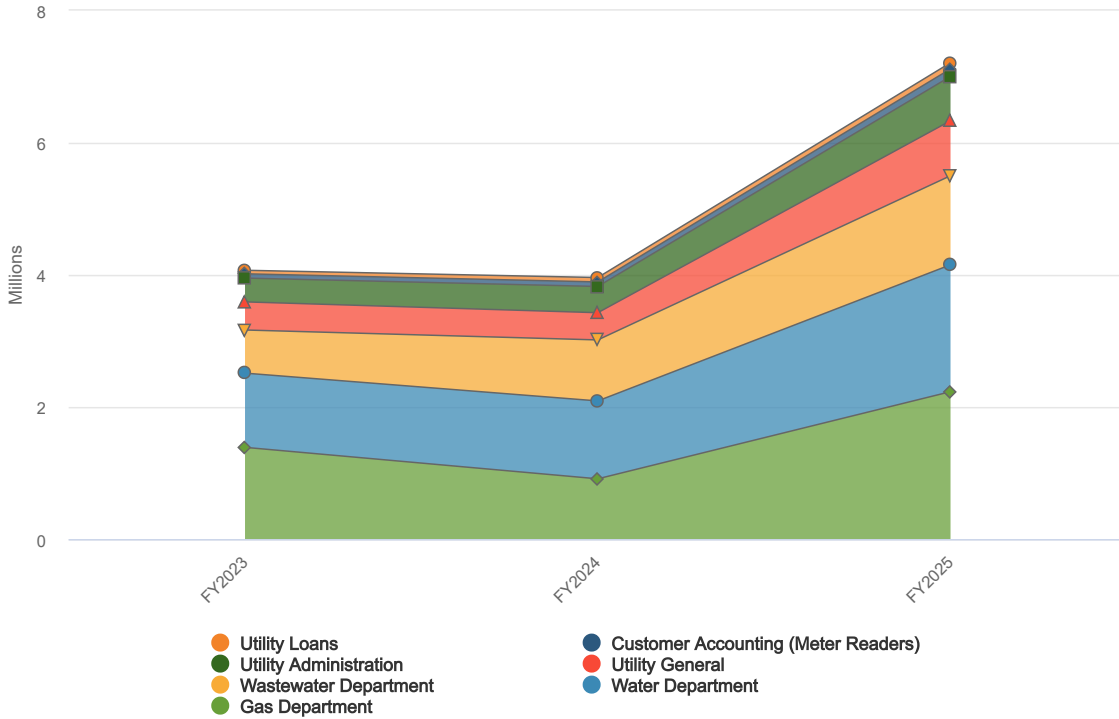
Marchand Water Tower



The Marchand Water Tower stands tall with Spartan spirit, providing vital water for City residents and visitors alike.

Expenditures by Function

Budgeted and Historical Expenditures by Function



Name	FY2023 Actuals	FY2024 Original Budget	FY2024 Projected Actual	FY2024 Amended Budget	FY2025 Original Budget	FY2024 Amended Budget vs. FY2025 Original Budget (% Change)
Expenditures						
Gas Department						
Payroll						
SALARIES	\$285,743	\$390,000	\$346,160	\$390,000	\$395,000	1.3%
OVERTIME	\$26,955	\$26,000	\$40,253	\$26,000	\$26,000	0%
RETIREMENT	\$83,432	\$116,000	\$93,009	\$116,000	\$112,000	-3.4%
MEDICARE TAX	\$3,917	\$5,500	\$3,930	\$5,500	\$6,000	9.1%
WORKERS COMP INSURANCE	\$11,189	\$20,000	\$22,597	\$20,000	\$21,000	5%
HEALTH INSURANCE	\$67,381	\$60,000	\$56,422	\$60,000	\$70,000	16.7%
Total Payroll:	\$478,617	\$617,500	\$562,372	\$617,500	\$630,000	2%
Supplies & Maintenance						
SUPPLIES & MAINTENANCE	\$683,379	\$245,000	\$178,553	\$245,000	\$248,000	1.2%
METER TECHNOLOGY EXPENSE	\$0	\$57,000	\$1,661	\$57,000	\$57,000	0%
UNIFORMS	\$2,800	\$4,000	\$3,580	\$4,000	\$4,000	0%
VEHICLE MAINTENANCE	\$2	\$10,000	\$6,029	\$10,000	\$10,000	0%



Name	FY2023 Actuals	FY2024 Original Budget	FY2024 Projected Actual	FY2024 Amended Budget	FY2025 Original Budget	FY2024 Amended Budget vs. FY2025 Original Budget (% Change)
Total Supplies & Maintenance:	\$686,180	\$316,000	\$189,824	\$316,000	\$319,000	0.9%
Utilities						
UTILITIES	\$54,969	\$60,000	\$36,882	\$60,000	\$60,000	0%
Total Utilities:	\$54,969	\$60,000	\$36,882	\$60,000	\$60,000	0%
Insurance						
LIABILITY INSURANCE	\$23,010	\$28,000	\$25,486	\$28,000	\$29,400	5%
PROPERTY INSURANCE	\$2,768	\$5,000	\$4,808	\$5,000	\$5,250	5%
Total Insurance:	\$25,777	\$33,000	\$30,294	\$33,000	\$34,650	5%
Education						
EDUCATION	\$2,531	\$5,000	\$1,040	\$5,000	\$5,000	0%
Total Education:	\$2,531	\$5,000	\$1,040	\$5,000	\$5,000	0%
Contracts						
NATURAL GAS PURCHASES	\$1,197,041	\$1,080,000	\$604,921	\$1,080,000	\$1,080,000	0%
PIPELINE INSPECTION CONT	\$125,498	\$102,000	\$63,975	\$102,000	\$102,000	0%
Total Contracts:	\$1,322,539	\$1,182,000	\$668,896	\$1,182,000	\$1,182,000	0%
Total Gas Department:	\$2,570,613	\$2,213,500	\$1,489,307	\$2,213,500	\$2,230,650	0.8%
Customer Accounting (Meter Readers)						
Payroll						
SALARIES	\$55,115	\$57,500	\$59,565	\$57,500	\$60,000	4.3%
OVERTIME	\$39	\$2,000	\$0	\$2,000	\$2,000	0%
RETIREMENT	\$15,970	\$17,000	\$16,398	\$17,000	\$17,000	0%
MEDICARE TAX	\$660	\$1,000	\$599	\$1,000	\$1,000	0%
WORKERS COMP INSURANCE	\$2,149	\$4,000	\$4,340	\$4,000	\$4,500	12.5%
HEALTH INSURANCE	\$21,183	\$20,000	\$19,065	\$20,000	\$21,000	5%
Total Payroll:	\$95,116	\$101,500	\$99,968	\$101,500	\$105,500	3.9%
Supplies & Maintenance						
SUPPLIES & MAINTENANCE	\$0	\$3,000	\$0	\$3,000	\$3,000	0%
UNIFORMS	\$737	\$1,000	\$678	\$1,000	\$1,000	0%
VEHICLE MAINTENANCE	\$570	\$1,000	\$0	\$1,000	\$1,000	0%
Total Supplies & Maintenance:	\$1,307	\$5,000	\$678	\$5,000	\$5,000	0%
Insurance						
LIABILITY INSURANCE	\$2,699	\$3,500	\$2,990	\$3,500	\$3,675	5%



Name	FY2023 Actuals	FY2024 Original Budget	FY2024 Projected Actual	FY2024 Amended Budget	FY2025 Original Budget	FY2024 Amended Budget vs. FY2025 Original Budget (% Change)
Total Insurance:	\$2,699	\$3,500	\$2,990	\$3,500	\$3,675	5%
Total Customer Accounting (Meter Readers):	\$99,122	\$110,000	\$103,636	\$110,000	\$114,175	3.8%
Water Department						
Payroll						
SALARIES	\$360,422	\$390,000	\$397,130	\$390,000	\$395,000	1.3%
OVERTIME	\$27,591	\$26,000	\$41,434	\$26,000	\$26,000	0%
RETIREMENT	\$105,314	\$116,000	\$108,430	\$116,000	\$112,000	-3.4%
MEDICARE TAX	\$4,850	\$5,500	\$4,488	\$5,500	\$6,000	9.1%
WORKERS COMP INSURANCE	\$11,189	\$20,000	\$22,597	\$20,000	\$21,000	5%
HEALTH INSURANCE	\$67,381	\$60,000	\$58,440	\$60,000	\$70,000	16.7%
Total Payroll:	\$576,748	\$617,500	\$632,519	\$617,500	\$630,000	2%
Supplies & Maintenance						
SUPPLIES & MAINTENANCE	\$1,253,505	\$600,000	\$591,527	\$600,000	\$600,000	0%
METER TECHNOLOGY EXPENSE	\$54,913	\$335,000	\$338,784	\$335,000	\$335,000	0%
UNIFORMS	\$2,800	\$4,000	\$3,580	\$4,000	\$4,000	0%
VEHICLE MAINTENANCE	\$6,728	\$10,000	\$5,931	\$10,000	\$10,000	0%
WATER TOWER MAINTENANCE	\$72,913	\$71,500	\$75,862	\$71,500	\$75,000	4.9%
WELL INSPECTION AND REPAI	\$111,462	\$115,000	\$118,044	\$115,000	\$120,000	4.3%
Total Supplies & Maintenance:	\$1,502,321	\$1,135,500	\$1,133,728	\$1,135,500	\$1,144,000	0.7%
Utilities						
UTILITIES/WATER PUMPING	\$98,126	\$110,000	\$75,311	\$110,000	\$110,000	0%
Total Utilities:	\$98,126	\$110,000	\$75,311	\$110,000	\$110,000	0%
Insurance						
LIABILITY INSURANCE	\$19,774	\$23,000	\$21,903	\$23,000	\$24,150	5%
PROPERTY INSURANCE	\$2,768	\$6,000	\$4,808	\$6,000	\$6,300	5%
Total Insurance:	\$22,542	\$29,000	\$26,710	\$29,000	\$30,450	5%
Education						
EDUCATION	\$8,017	\$6,000	\$6,629	\$6,000	\$7,000	16.7%
Total Education:	\$8,017	\$6,000	\$6,629	\$6,000	\$7,000	16.7%
Miscellaneous						
WTR/GAS MTR LEASE INTERES	\$87,711		\$0	\$0	\$0	0%



Name	FY2023 Actuals	FY2024 Original Budget	FY2024 Projected Actual	FY2024 Amended Budget	FY2025 Original Budget	FY2024 Amended Budget vs. FY2025 Original Budget (% Change)
Total Miscellaneous:	\$87,711		\$0	\$0	\$0	0%
Total Water Department:	\$2,295,465	\$1,898,000	\$1,874,899	\$1,898,000	\$1,921,450	1.2%
Wastewater Department						
Payroll						
SALARIES	\$398,016	\$405,000	\$376,642	\$405,000	\$421,000	4%
OVERTIME	\$20,720	\$21,000	\$24,754	\$21,000	\$21,000	0%
RETIREMENT	\$117,563	\$118,000	\$103,289	\$118,000	\$119,000	0.8%
MEDICARE TAX	\$5,314	\$6,500	\$4,120	\$6,500	\$7,000	7.7%
WORKERS COMP INSURANCE	\$10,468	\$19,000	\$21,140	\$19,000	\$20,000	5.3%
HEALTH INSURANCE	\$96,399	\$85,000	\$68,205	\$85,000	\$92,000	8.2%
Total Payroll:	\$648,479	\$654,500	\$598,150	\$654,500	\$680,000	3.9%
Supplies & Maintenance						
SUPPLIES & MAINTENANCE	\$97,622	\$70,000	\$104,977	\$70,000	\$80,000	14.3%
UNIFORMS	\$3,964	\$4,500	\$3,945	\$4,500	\$4,500	0%
VEHICLE MAINTENANCE	\$10,678	\$8,000	\$6,497	\$8,000	\$8,000	0%
GENERATOR MAINTENANCE WW	\$24,269	\$20,000	\$25,688	\$20,000	\$40,000	100%
REGULATORY	\$40,736	\$43,000	\$38,568	\$43,000	\$43,000	0%
CHEMICALS - WW	\$33,124	\$50,000	\$38,977	\$50,000	\$50,000	0%
Total Supplies & Maintenance:	\$210,393	\$195,500	\$218,652	\$195,500	\$225,500	15.3%
Utilities						
UTILITIES/WASTERWATER PLANT	\$303,766	\$250,000	\$423,832	\$250,000	\$275,000	10%
UTILITIES/LIFT STATION	\$116,133	\$120,000	\$114,535	\$120,000	\$130,000	8.3%
Total Utilities:	\$419,900	\$370,000	\$538,367	\$370,000	\$405,000	9.5%
Insurance						
LIABILITY INSURANCE	\$15,041	\$18,000	\$16,660	\$18,000	\$18,900	5%
PROPERTY INSURANCE	\$6,016	\$13,500	\$12,849	\$13,500	\$14,175	5%
Total Insurance:	\$21,057	\$31,500	\$29,509	\$31,500	\$33,075	5%
Education						
EDUCATION	\$2,172	\$5,000	\$645	\$5,000	\$5,000	0%
Total Education:	\$2,172	\$5,000	\$645	\$5,000	\$5,000	0%
Total Wastewater Department:	\$1,302,000	\$1,256,500	\$1,385,322	\$1,256,500	\$1,348,575	7.3%
Utility Administration						
Payroll						
SALARIES	\$281,366	\$314,500	\$294,211	\$314,500	\$319,000	1.4%



Name	FY2023 Actuals	FY2024 Original Budget	FY2024 Projected Actual	FY2024 Amended Budget	FY2025 Original Budget	FY2024 Amended Budget vs. FY2025 Original Budget (% Change)
OVERTIME	\$1,454	\$3,000	\$1,167	\$3,000	\$3,000	0%
RETIREMENT	\$78,263	\$94,000	\$80,397	\$94,000	\$91,000	-3.2%
MEDICARE TAX	\$3,316	\$4,000	\$2,989	\$4,000	\$4,500	12.5%
WORKERS COMP INSURANCE	\$680	\$3,500	\$1,373	\$3,500	\$4,000	14.3%
HEALTH INSURANCE	\$50,050	\$60,500	\$38,597	\$60,500	\$52,000	-14%
Total Payroll:	\$415,128	\$479,500	\$418,733	\$479,500	\$473,500	-1.3%
Supplies & Maintenance						
OFFICE SUPPLIES - UTILITY	\$49	\$6,000	\$1,179	\$6,000	\$6,000	0%
UNIFORMS	\$0	\$2,000	\$0	\$2,000	\$2,000	0%
Total Supplies & Maintenance:	\$49	\$8,000	\$1,179	\$8,000	\$8,000	0%
Insurance						
LIABILITY INSURANCE	\$6,585	\$9,000	\$7,294	\$9,000	\$9,450	5%
Total Insurance:	\$6,585	\$9,000	\$7,294	\$9,000	\$9,450	5%
Data Processing						
DATA PROCESSING UTILITY	\$71,950	\$120,000	\$114,803	\$120,000	\$125,000	4.2%
BILLING - UF	\$51,077	\$50,000	\$53,729	\$50,000	\$55,000	10%
Total Data Processing:	\$123,027	\$170,000	\$168,532	\$170,000	\$180,000	5.9%
Total Utility Administration:	\$544,790	\$666,500	\$595,738	\$666,500	\$670,950	0.7%
Utility General						
Payroll						
SALARIES	\$165,882	\$173,500	\$171,739	\$173,500	\$170,000	-2%
RETIREMENT	\$37,654	\$42,500	\$37,928	\$42,500	\$42,000	-1.2%
MEDICARE TAX	\$3,454	\$5,000	\$3,053	\$5,000	\$5,000	0%
WORKERS COMP INSURANCE	\$450	\$1,300	\$909	\$1,300	\$1,300	0%
HEALTH INSURANCE	\$186,589	\$150,000	\$158,533	\$150,000	\$150,000	0%
Total Payroll:	\$394,028	\$372,300	\$372,162	\$372,300	\$368,300	-1.1%
Legal & Professional						
LEGAL FEES	\$27,295	\$45,000	\$13,994	\$45,000	\$45,000	0%
ACCOUNTING & AUDIT FEES	\$28,850	\$30,000	\$30,300	\$30,000	\$30,000	0%
ENGINEERING FEES	\$0	\$25,000	\$0	\$25,000	\$25,000	0%
CONSULTING FEES	\$35,512	\$137,500	\$76,786	\$137,500	\$150,000	9.1%
Total Legal & Professional:	\$91,657	\$237,500	\$121,080	\$237,500	\$250,000	5.3%
Supplies & Maintenance						

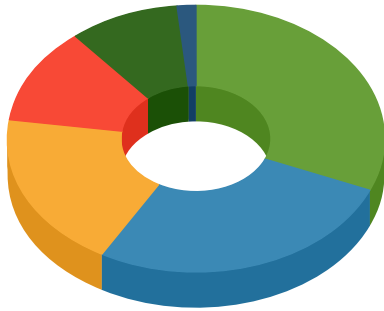


Name	FY2023 Actuals	FY2024 Original Budget	FY2024 Projected Actual	FY2024 Amended Budget	FY2025 Original Budget	FY2024 Amended Budget vs. FY2025 Original Budget (% Change)
GAS & OIL	\$51,142	\$60,000	\$53,963	\$60,000	\$60,000	0%
SUPPLIES & MAINTENANCE	\$60,479	\$45,000	\$56,561	\$45,000	\$55,000	22.2%
VEHICLE MAINTENANCE	\$0	\$8,000	\$0	\$8,000	\$8,000	0%
BAD DEBT EXPENSE	\$38,215	\$16,000	\$0	\$16,000	\$16,000	0%
Total Supplies & Maintenance:	\$149,836	\$129,000	\$110,525	\$129,000	\$139,000	7.8%
Insurance						
LIABILITY INSURANCE	\$8,919	\$12,000	\$11,614	\$12,000	\$12,600	5%
Total Insurance:	\$8,919	\$12,000	\$11,614	\$12,000	\$12,600	5%
Education						
EDUCATION	\$116	\$17,500	\$2,615	\$17,500	\$17,500	0%
Total Education:	\$116	\$17,500	\$2,615	\$17,500	\$17,500	0%
Miscellaneous						
EMERGENCIES & CONTINGENCIES	\$149,152	\$30,000	\$0	\$30,000	\$45,000	50%
Total Miscellaneous:	\$149,152	\$30,000	\$0	\$30,000	\$45,000	50%
Total Utility General:	\$793,708	\$798,300	\$617,996	\$798,300	\$832,400	4.3%
Transfers						
Miscellaneous						
TRANSFER TO OTHER FUNDS	\$2,062,137		\$0	\$0	\$0	0%
Total Miscellaneous:	\$2,062,137		\$0	\$0	\$0	0%
Total Transfers:	\$2,062,137		\$0	\$0	\$0	0%
Utility Loans						
Miscellaneous						
LDH LOAN INTEREST	\$24,962		\$27,983	\$0	\$0	0%
LDH LOAN ADMIN FEE	\$1,300		\$7,175	\$0	\$0	0%
DEQ LOAN INTEREST	\$44,417	\$44,418	\$30,680	\$44,418	\$44,418	0%
PAYING AGENT FEES	\$49,352	\$49,353	\$34,089	\$49,353	\$49,353	0%
Total Miscellaneous:	\$120,032	\$93,771	\$99,927	\$93,771	\$93,771	0%
Total Utility Loans:	\$120,032	\$93,771	\$99,927	\$93,771	\$93,771	0%
Total Expenditures:	\$9,787,868	\$7,036,571	\$6,166,824	\$7,036,571	\$7,211,971	2.5%



Fiscal Year 2025 Expenditures

Utility Fund Operating Budget by Department



- Gas Department **(Budgeted)**\$2,230,650 (31.34%)
- Water Department **(Budgeted)**\$1,921,450 (26.99%)
- Wastewater Department **(Budgeted)**\$1,348,575 (18.95%)
- Utility General **(Budgeted)**\$832,400 (11.69%)
- Utility Administration **(Budgeted)**\$670,950 (9.43%)
- Customer Accounting (Meter Readers) **(Budgeted)**\$114,175 (1.60%)

FY 2025 Water Rate Table

WATER

CITY OF GONZALES RATE TABLES
2024-2025

USE THIS TABLE FOR:	RESIDENTIAL WATER INSIDE COMMERCIAL WATER INSIDE GOVERNMENT WATER INSIDE				
	2021	2022	2023	2024	2025
CPI Rate (Inflation)	3.00%	3.00%	3.00%	3.00%	3.00%
Technology Fee (Flat Rate \$5.25) Effective 6/1/2019-5/31/2029	\$5.25	\$5.25	\$5.25	\$5.25	\$5.25
Minimum Charge					
Residential Minimum	10.30	10.76	11.08	11.41	11.75
Commercial Minimum	25.54	26.47	27.26	28.08	28.92
Government Minimum	25.54	26.47	27.26	28.08	28.92
Price per each 1,000 Gallons over the first 3,000 Gallons	2.21	2.28	2.34	2.41	2.49

USE THIS TABLE FOR:	RESIDENTIAL WATER OUTSIDE COMMERCIAL WATER OUTSIDE GOVERNMENT WATER OUTSIDE				
	2021	2022	2023	2024	2025
CPI Rate (Inflation)	3.00%	3.00%	3.00%	3.00%	3.00%
Technology Fee (Flat Rate \$5.25) Effective 6/1/2019-5/31/2029	\$5.25	\$5.25	\$5.25	\$5.25	\$5.25
Minimum Charge					
Residential Minimum	15.46	16.08	16.56	17.06	17.57
Commercial Minimum	38.30	39.61	40.80	42.02	43.28
Government Minimum	38.30	39.61	40.80	42.02	43.28
Price per each 1,000 Gallons over the first 3,000 Gallons	3.08	3.18	3.27	3.37	3.47

USE THIS TABLE FOR:	RESIDENTIAL WATER OUTSIDE PLUS FIRE PROTECTION				
	2021	2022	2023	2024	2025
CPI Rate (Inflation)	3.00%	3.00%	3.00%	3.00%	3.00%
Minimum Charge					
Residential Water + Fire Protection Minimum	19.33	19.91	20.51	21.12	21.76
Price per each 1,000 Gallons over the first 3,000 Gallons	3.85	3.97	4.09	4.21	4.34

USE THIS TABLE FOR:	CONTRACTOR WATER INSIDE CONTRACTOR WATER OUTSIDE				
	2021	2022	2023	2024	2025
CPI Rate (Inflation)	3.00%	3.00%	3.00%	3.00%	3.00%
Technology Fee (Flat Rate \$5.25) Effective 6/1/2019-5/31/2029	\$5.25	\$5.25	\$5.25	\$5.25	\$5.25
Minimum Charge					
Contractor Water Inside	168.95	174.01	179.24	184.61	190.15
Contractor Water Outside	250.79	258.32	266.07	274.05	282.27
Price per each 1,000 Gallons over the first 3,000 Gallons - Inside City	5.98	6.16	6.35	6.54	6.73
Price per each 1,000 Gallons over the first 3,000 Gallons - Outside City	8.78	9.04	9.31	9.59	9.88



FY 2025 Sewer Rate Table

SEWER

CITY OF GONZALES RATE TABLES

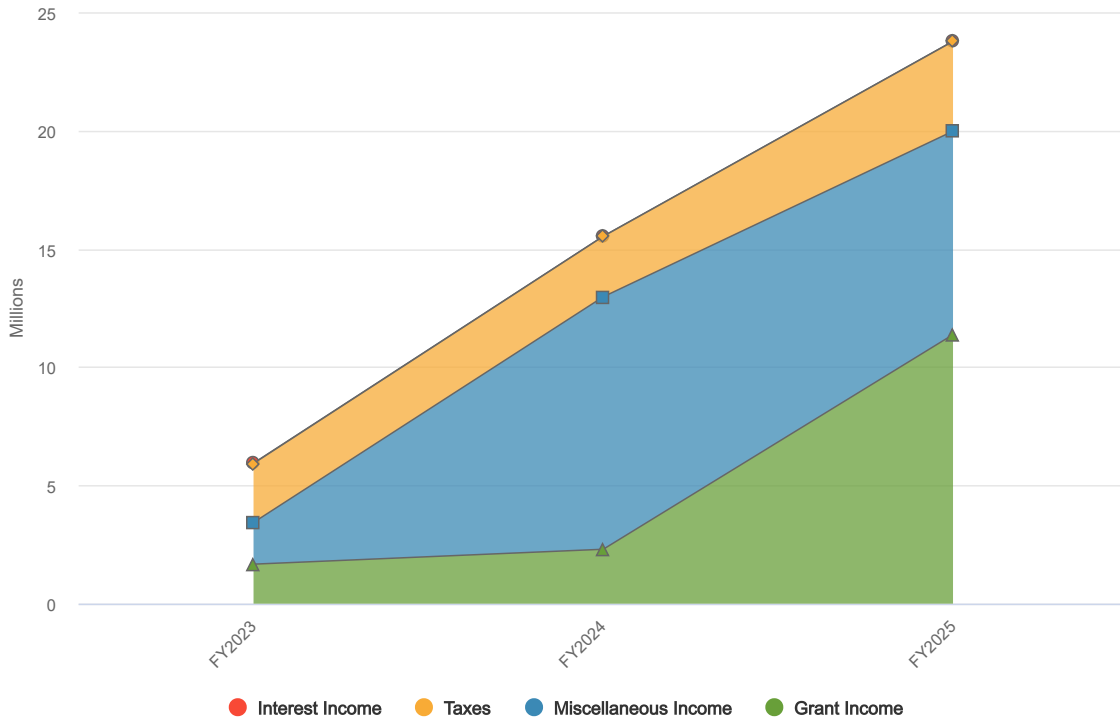
USE THIS TABLE FOR:	METERED SEWER RATES					
	effective 11/23/2020 Ord # 4139					
	2021	2021	2022	2023	2024	2025
CPI Rate (Inflation)	3.00%		5.00%	5.00%	5.00%	5.00%
Minimum Charge						
Residential Sewer Minimum	10.30	15.30	16.06	16.87	17.71	18.60
Commercial Sewer Minimum	19.65	30.00	31.50	33.08	34.73	36.47
Government Sewer Minimum	19.65	30.00	31.50	33.08	34.73	36.47
Residential Sewer Rate	2.75	4.00	4.20	4.41	4.63	4.86
Commercial Sewer Rate	2.75	4.00	4.20	4.41	4.63	4.86
Government Sewer Rate	2.75	4.00	4.20	4.41	4.63	4.86

USE THIS TABLE FOR:	RESIDENTIAL FLAT SEWER RATES COMMERCIAL FLAT SEWER RATES GOVERN. FLAT SEWER RATES					
	2021	2021	2022	2023	2024	2025
CPI Rate (Inflation)	3.00%		3.00%	3.00%	3.00%	3.00%
No Minimum Charge						
First 3 Fixtures	6.88	10.10	10.40	10.72	11.04	11.37
Each of the Next 6 Fixtures	2.16	3.17	3.26	3.36	3.46	3.56
All Other Fixtures	1.08	1.59	1.64	1.69	1.74	1.79



Revenues by Source

Budgeted and Historical 2025 Revenues by Source



Name	FY2023 Actuals	FY2024 Original Budget	FY2024 Projected Actual	FY2024 Amended Budget	FY2025 Original Budget	FY2024 Amended Budget vs. FY2025 Original Budget (% Change)
Revenue Source						
Taxes						
SALES TAX APPROPRIATIONS	\$3,746,896	\$3,615,040	\$3,834,454	\$3,615,040	\$3,795,792	5%
Total Taxes:	\$3,746,896	\$3,615,040	\$3,834,454	\$3,615,040	\$3,795,792	5%
Interest Income						
INTEREST EARNED	\$41,562		\$5,331	\$0	\$5,000	N/A
Total Interest Income:	\$41,562		\$5,331	\$0	\$5,000	N/A
Miscellaneous Income						
PACE CENTER LOAN PROCEEDS	\$0	\$4,500,000	\$4,411,608	\$4,500,000	\$0	-100%
LDH SRF LOAN PROCEEDS	-\$1	\$0	\$0	\$0	\$0	0%
TRANSFER FROM GENERAL FUND	\$3,481,157	\$5,500,000	\$5,500,000	\$5,500,000	\$3,000,000	-45.5%

Name	FY2023 Actuals	FY2024 Original Budget	FY2024 Projected Actual	FY2024 Amended Budget	FY2025 Original Budget	FY2024 Amended Budget vs. FY2025 Original Budget (% Change)
TRANSFER FROM UTILITY FUN	\$0		\$0	\$0	\$4,600,000	N/A
TRANSFER FROM OTHER FUNDS	\$2,054,476	\$5,413,000	\$7,900,000	\$5,413,000	\$1,000,000	-81.5%
Total Miscellaneous Income:	\$5,535,632	\$15,413,000	\$17,811,608	\$15,413,000	\$8,600,000	-44.2%
Grant Income						
Grants-DOTD-State Portion	\$1,225,226	\$500,000	\$0	\$500,000	\$3,284,000	556.8%
GRANTS - HUD - CARE CENTER	\$0	\$3,000,000	\$0	\$3,000,000	\$3,000,000	0%
GRANTS-AMERICAN RESCUE PLAN	\$0		\$0	\$0	\$4,059,074	N/A
GRANTS-LGAP CAP OUTLAY	\$0	\$30,000	\$30,000	\$30,000	\$30,000	0%
GRANTS - STATE CWEF	\$50,000		\$0	\$0	\$0	0%
GRANTS - STATE CAP OUTLAY	\$901,446	\$3,325,000	\$1,376,091	\$3,325,000	\$1,000,000	-69.9%
<i>Grants - State Cap Outlay</i>	<i>\$0</i>	<i>\$2,325,000</i>	<i>\$0</i>	<i>\$0</i>	<i>\$0</i>	<i>0%</i>
<i>Federal Solar Grant</i>	<i>\$0</i>	<i>\$1,000,000</i>	<i>\$0</i>	<i>\$0</i>	<i>\$0</i>	<i>0%</i>
GRANTS - POLICE EQUIPMENT	\$0		\$4,739	\$0	\$0	0%
PACE CENTER NAMING RIGHTS	\$500,000	\$1,000,000	\$1,000,000	\$1,000,000	\$0	-100%
Total Grant Income:	\$2,676,672	\$7,855,000	\$2,410,830	\$7,855,000	\$11,373,074	44.8%
Total Revenue Source:	\$12,000,763	\$26,883,040	\$24,062,223	\$26,883,040	\$23,773,866	-11.6%



The Gonzales CARE (Community, Activities, Recreation and Education) Center's construction will begin during fiscal year 2025.

Expenditures by Function

Name	FY2023 Actuals	FY2024 Original Budget	FY2024 Projected Actual	FY2024 Amended Budget	FY2025 Original Budget	FY2024 Amended Budget vs. FY2025 Original Budget (% Change)
Expenditures						
Streets & Drainage Department						
Capital Expense						
INTERSTATE LIGHTING	\$0	\$20,000	\$0	\$20,000	\$20,000	0%
BULKHEAD MATERIALS	\$12,000	\$120,000	\$0	\$120,000	\$120,000	0%
STREET DEPT/DRAINAGE EQUI	\$130,687	\$418,100	\$382,013	\$418,100	\$558,679	33.6%
SIDEWALK CONSTRUCTION	\$50,656	\$70,000	\$58,694	\$70,000	\$70,000	0%
ROAD IMPROVEMENTS	\$2,721,307	\$8,207,500	\$4,769,128	\$8,207,500	\$6,430,000	-21.7%
Total Capital Expense:	\$2,914,650	\$8,835,600	\$5,209,835	\$8,835,600	\$7,198,679	-18.5%
Total Streets & Drainage Department:	\$2,914,650	\$8,835,600	\$5,209,835	\$8,835,600	\$7,198,679	-18.5%
General						
Capital Expense						
RECREATION CAPITAL OUTLAY	\$1,124,611	\$3,875,200	\$2,537,637	\$3,875,200	\$1,731,000	-55.3%
BUILDINGS & GROUNDS CAP O	\$106,211	\$1,122,500	\$543,136	\$1,122,500	\$8,860,000	689.3%
GENERAL CAPITAL	\$58,942	\$80,000	\$79,810	\$80,000	\$213,800	167.3%
PROPERTY ACQUISITION	\$80,097	\$250,000	\$0	\$250,000	\$250,000	0%
CODE ENFORCEMENT CAP OUTL	\$20,578	\$65,000	\$42,322	\$65,000	\$81,000	24.6%
CIVIC CENTER CAPITAL OUTLAY	\$0	\$60,000	\$0	\$60,000	\$60,000	0%
CITY ROOM CAPITAL OUTLAY	\$6,944	\$10,000	\$0	\$10,000	\$10,000	0%
PACE Center	\$6,325,236	\$7,605,000	\$6,424,345	\$7,605,000	\$168,000	-97.8%
T. JOE MUSEUM CAPITAL OUTLAY	\$0	\$10,000	\$0	\$10,000	\$10,000	0%
FIRE DEPT CAPITAL OUTLAY	\$328,413	\$1,060,000	\$942,385	\$1,060,000	\$800,000	-24.5%
POLICE DEPT CAPITAL OUTLA	\$528,823	\$1,155,851	\$1,062,953	\$1,155,851	\$1,034,412	-10.5%
Total Capital Expense:	\$8,579,854	\$15,293,551	\$11,632,588	\$15,293,551	\$13,218,212	-13.6%
Total General:	\$8,579,854	\$15,293,551	\$11,632,588	\$15,293,551	\$13,218,212	-13.6%
Utility General						
Capital Expense						
WASTEWATER CAPITAL OUTLAY	\$0	\$1,775,000	\$636,565	\$1,775,000	\$1,899,800	7%



Name	FY2023 Actuals	FY2024 Original Budget	FY2024 Projected Actual	FY2024 Amended Budget	FY2025 Original Budget	FY2024 Amended Budget vs. FY2025 Original Budget (% Change)
WATER SYSTEM CAPITAL OUTL	\$0	\$1,578,500	\$1,570,402	\$2,178,500	\$2,433,000	11.7%
GAS SYSTEM CAPITAL OUTLAY	\$0	\$330,000	\$485,301	\$330,000	\$250,000	-24.2%
Total Capital Expense:	\$0	\$3,683,500	\$2,692,267	\$4,283,500	\$4,582,800	7%
Total Utility General:	\$0	\$3,683,500	\$2,692,267	\$4,283,500	\$4,582,800	7%
Total Expenditures:	\$11,494,504	\$27,812,651	\$19,534,690	\$28,412,651	\$24,999,691	-12%



Fire Department Capital Outlay FY 2025

Budget/Project No.	Description	Amount
1	Generator Replacement, Orice Roth Fire Station	\$60,000
2	Orice Roth Fire Station Roof Repair	110,000
3	Burn Building Repair and Rehab	200,000
4	Additional Fencing near EMS Building (150 linear feet)	20,000
5	Replacements & Upgrades to Portable Radios	75,000
6	Ambulance Medical Equip	200,000
7	EMS Equipment Replacement (IV Pumps, Training Equipment)	50,000
8	Apparatus Upgrades	35,000
9	Fire Hose Replacement	50,000
	<u>Total FY 2025</u>	<u>\$800,000</u>

Police Department Capital Outlay FY 2025

Budget/Project No.	Description	Amount
1	Leased Vehicles	\$421,817
2	Patrol Equipment	72,900
3	Motors Equipment	33,000
4	Criminal Investigations	74,270
5	Information Technology	140,450
6	Training Equipment	47,000
7	Special Operations	152,775
8	Honor Guard	10,200
9	Portable radios (Carry Forward)	82,000
	<u>Subtotal, New Items FY 2025</u>	<u>\$1,034,412</u>

Capital Road Improvements FY 2025

Budget/Project No.	Description	Amount
21-SD-01	*^Bayou Boyle Detention Project 53 acres	\$2,305,000
21-SD-02	*Kennedy Heights Drainage Improvements	500,000
22-SD-02	US 61 Superstreet	350,000
22-SD-03	LOLO Connector (St. Francis Connector Phase 2)	800,000
23-SD-08	Carbon Reduction Program - LA 44 Traffic Signals	100,000
22-GG-02	Passenger Rail Station - Engineering	75,000
24-SD-01	Sidewalk and Pedestrian Access Improvements	300,000
24-SD-02	2024 Roadway Rehabilitation (concrete and asphalt)	2,000,000
	<u>Total FY 2025</u>	<u>\$6,430,000</u>

Streets and Drainage Equipment Capital Outlay FY 2025

Budget/Project No.	Description	Amount
1	X-Mark 60" Diesel Mower	\$21,679
2	Grappler truck 25 yard	205,000
3	Schwarze A400 Street Sweeper	245,000
4	Forklift (warehouse)	35,000
5	Lease Vehicles	52,000
	<u>Total FY 2025</u>	<u>\$558,679</u>

Water Rehabilitation Capital Outlay FY 2025

Budget/Project No.	Description	Amount
24-W-911	Water Emergency Leak Repairs	250,000
22-W-01	Water Modeling Growth and Project Planning	35,000
23-W-01	Fire Hydrant Testing	40,000
23-W-07	Water Well Mechanical and Electrical Upgrades (CARRYOVER)	600,000
24-W-01	Water Line Replacement E. Weber/N. Irma to N. Edenborne (CARRYOVER)	63,000
24-W-02	Water Line Replacement Courtyard Apts (CARRYOVER)	150,000
24-W-03	Water Rehab on E. Weber	134,000
24-W-04	Water Rehab on E. Sanders	215,000
24-W-05	Water Rehab on E. McArthur	180,000
24-W-06	Water Rehab on E. Caldwell	217,000
24-W-07	Water Rehab on N. Pleasant	146,000
24-W-08	Water Valves - 1st phase of water rehab	150,000
1	(1) Bad Boy Lawn Mower	50,000
2	(2) Kubota K Series Excavator (CARRY OVER)	112,000
3	(2) Trailer for Kubota Excavator (CARRY OVER)	22,000
4	(1) CGI Leak Detection and Locating Devices (CARRY OVER)	10,000
5	Lease Vehicles	59,000
	<u>Total FY 2025</u>	<u>\$2,433,000</u>

Gas Rehabilitation Capital Outlay FY 2025

Budget/Project No.	Description	Amount
24-NG-911	EMERGENCY GAS PROJECTS	250,000
	<u>Total FY 2025</u>	<u>\$250,000</u>



Waste Water Rehabilitation Capital Outlay FY 2025

Budget/Project No.	Description	Amount
24-WW-911	Emergency sewer repairs	\$275,000
22-WW-01	Sewer Modeling Growth Projections and Project Planning (CARRYOVER)	100,000
24-WW-02	Lift Station 43 Pump Rehab (CARRYOVER)	175,000
24-WW-03	Lift Station 13 Rehab & Force Main (CARRYOVER)	80,000
24-WW-04	WWTP Solar Conversion (100% Federal Assistance Funding)	1,000,000
23-WW-05	Fence Rehab various lift stations	15,000
23-WW-06	WWTP Office Building rehab (CARRYOVER)	25,000
24-WW-05	Lift Station 9-B Rehab	140,000
24-WW-06	LS 11 Pump Rehab	25,000
24-WW-07	Asphalt Existing Treatment Pond Levee	34,800.00
	Lease Vehicles	30,000
	<u>Total FY 2025</u>	<u>\$1,899,800</u>



Buildings and Grounds Capital Outlay FY 2025

Budget/Project No.	Description	Amount
21-R-01	*^CARE Center	7,158,000
21-R-01	CARE Center furnishings	24,000
24-BG-01	City Hall Christmas light replacements	30,000
24-BG-02	Civic Center camera/security system upgrade	20,000
24-BG-03	Recreation shop camera/security system upgrade	20,000
24-BG-04	City Hall rear offices renovation	100,000
24-BG-05	Recreation shop new roof	120,000
24-BG-06	DPW Maintenance Buildings facade, roof/gutters replacement	200,000
24-BG-07	City Room restroom upgrade	40,000
24-BG-08	CEA-Asc Public Schools-EA High Scoreboard	100,000
24-BG-09	City Room demo and new building replacement	1,000,000
	Lease Vehicles	48,000
	<u>Total FY 2025</u>	<u>\$8,860,000</u>

*U.S. HUD grant funding expected allocation of \$3,000,000 for this project

^Federal ARPA funding allocated



Recreation Capital Outlay FY 2025

Budget/Project No.	Description	Amount
23-PR-01	Municipal Park Pickleball Courts	260,000
23-PR-01	Municipal Park Pickleball Restrooms	140,000
23-PR-06	Tee-Joe Parking Lot Resurface	125,000
23-PR-09	Municipal Park Drainage Improvement-4 fields	40,000
24-PR-01	Municipal Park Concession Stand Demo	\$60,000
24-PR-02	Tee Joe basketball metal cover	75,000
24-PR-03	Municipal Park Walking Path repairs	14,000
24-PR-04	Carver/TeeJoe camera/security system	48,000
24-PR-05	Signage (all parks)	35,000
24-PR-06	Tee Joe basketball limestone parking	\$3,000
24-PR-07	Tee Joe playground replacements	160,000
24-PR-08	Municipal Park front park upgrades	120,000
24-PR-09	Municipal Park back 3 playground replacements	240,000
24-PR-10	Jambalaya Park pump room/spray park repairs	100,000
24-PR-11	Municipal Park fence replacement/tree removal	130,000
24-PR-12	Jambalya Park fish pond bridge replacement	60,000
24-PR-13	City Room/Hwy 30 rear field fence replacement	50,000
24-PR-14	Dirt for improvements	9,000
	(2) zero turn lawn mowers	33,000
	Lease Vehicles	29,000
	<u>Total FY 2025</u>	<u>\$1,731,000</u>



Code Enforcement Capital Outlay FY 2025

Budget/Project No.	Description	Amount
1	Lease Vehicles	\$21,000
2	Miscellaneous Tools	5,000
3	Blighted Properties	50,000
4	Technical Manuals/Software	5,000
	<u>Total FY 2025</u>	<u>\$81,000</u>



General Capital Outlay FY 2025

Budget/Project No.	Description	Amount
1	Server Room Equipment (carryover)	\$ 18,000
2	Lease Vehicle	28,800
3	General Upgrades, Repairs, Computers, Office Desks	27,000
4	Climate Action Engineering	15,000
5	City Hall drive thru window replacement	15,000
6	City Council Audio Visual System	110,000
	<u>Total FY 2025</u>	<u>\$213,800</u>

City Room Capital Outlay FY 2025

Budget/Project No.	Description	Amount
1	Miscellaneous Items	\$10,000
	<u>Total FY 2025</u>	<u>\$10,000</u>

Civic Center Capital Outlay FY 2025

Budget/Project No.	Description	Amount
1	Misc Repairs and Maintenance	\$60,000
	<u>Total FY 2025</u>	<u>\$60,000</u>

PACE Center Capital Outlay FY 2025

Budget/Project No.	Description	Amount
1	Headsets	\$40,000
2	Wireless Mics	30,000
3	Stage Monitors	15,000
4	Lights - Moving fixture	40,000
5	Lift	43,000
	<u>Total FY 2025</u>	<u>\$168,000</u>



Revenue by Fund

Name	FY2023 Actuals	FY2024 Original Budget	FY2024 Projected Actual	FY2024 Amended Budget	FY2025 Original Budget	FY2024 Amended Budget vs. FY2025 Original Budget (% Change)
Industrial Development Board	\$986,367	\$890,000	\$1,019,360	\$890,000	\$950,000	6.7%
Total Industrial Development Board:	\$986,367	\$890,000	\$1,019,360	\$890,000	\$950,000	6.7%

Expenditures by Fund

Name	FY2023 Actuals	FY2024 Original Budget	FY2024 Projected Actual	FY2024 Amended Budget	FY2025 Original Budget	FY2024 Amended Budget vs. FY2025 Original Budget (% Change)
Industrial Development Board	\$986,367	\$890,000	\$1,019,360	\$890,000	\$950,000	6.7%
Total Industrial Development Board:	\$986,367	\$890,000	\$1,019,360	\$890,000	\$950,000	6.7%

The Tanger Mall Economic Development Fund was established in 2012 to account for revenues generated by the City's tax increment financing arrangement to fund infrastructure for Tanger Mall using a one cent sales tax overlay in the District. The proceeds are allocated 70% to Tanger for infrastructure and 30% to the City of Gonzales for economic development.

Revenue by Fund

Name	FY2023 Actuals	FY2024 Original Budget	FY2024 Projected Actual	FY2024 Amended Budget	FY2025 Original Budget	FY2024 Amended Budget vs. FY2025 Original Budget (% Change)
Tanger Mall Economic Dev	\$1,077,659	\$1,060,000	\$1,015,746	\$1,060,000	\$1,090,000	2.8%
Total Tanger Mall Economic Dev:	\$1,077,659	\$1,060,000	\$1,015,746	\$1,060,000	\$1,090,000	2.8%

Expenditures by Fund

Name	FY2023 Actuals	FY2024 Original Budget	FY2024 Projected Actual	FY2024 Amended Budget	FY2025 Original Budget	FY2024 Amended Budget vs. FY2025 Original Budget (% Change)
Tanger Mall Economic Dev	\$686,061	\$1,060,000	\$657,938	\$1,060,000	\$1,060,000	0%
Total Tanger Mall Economic Dev:	\$686,061	\$1,060,000	\$657,938	\$1,060,000	\$1,060,000	0%

The Wastewater impact fee was adopted in 2014 to offset increased infrastructure costs related to expanding wastewater services to new development. Fees were gradually increased until 2019 to reflect the calculated impact.

Revenue by Fund

Name	FY2023 Actuals	FY2024 Original Budget	FY2024 Projected Actual	FY2024 Amended Budget	FY2025 Original Budget	FY2024 Amended Budget vs. FY2025 Original Budget (% Change)
Wastewater Impact Fees	\$640,598	\$320,000	\$572,489	\$320,000	\$412,000	28.8%
Total Wastewater Impact Fees:	\$640,598	\$320,000	\$572,489	\$320,000	\$412,000	28.8%

Expenditures by Fund

Name	FY2023 Actuals	FY2024 Original Budget	FY2024 Projected Actual	FY2024 Amended Budget	FY2025 Original Budget	FY2024 Amended Budget vs. FY2025 Original Budget (% Change)
Wastewater Impact Fees	\$0	\$320,000	\$0	\$320,000	\$412,000	28.8%
Total Wastewater Impact Fees:	\$0	\$320,000	\$0	\$320,000	\$412,000	28.8%

Wastewater Facilities Impact Fee (Rounded to the Nearest Dollar)

Water Meter Size (Inches)	Estimated Water Flow GPD/Customer	2014	2015	2016	2017	2018	2019
3/4	1,162	\$2,265	\$2,492	\$2,742	\$3,017	\$3,319	\$3,651
1	1,237	\$2,345	\$2,580	\$2,838	\$3,122	\$3,435	\$3,779
1 1/2	3,688	\$6,996	\$7,696	\$8,466	\$9,313	\$10,245	\$11,270
2	15,378	\$29,170	\$32,087	\$35,296	\$38,826	\$42,709	\$46,980
3	16,441				\$41,508	\$45,659	\$50,225
4	39,869	\$75,625	\$83,188	\$91,507	\$100,658	\$110,724	\$121,797

Revenue by Fund

Name	FY2023 Actuals	FY2024 Original Budget	FY2024 Projected Actual	FY2024 Amended Budget	FY2025 Original Budget	FY2024 Amended Budget vs. FY2025 Original Budget (% Change)
Conway Economic Dev	\$284,678	\$120,000	\$147,777	\$120,000	\$140,000	16.7%
Total Conway Economic Dev:	\$284,678	\$120,000	\$147,777	\$120,000	\$140,000	16.7%

Expenditures by Fund

Name	FY2023 Actuals	FY2024 Original Budget	FY2024 Projected Actual	FY2024 Amended Budget	FY2025 Original Budget	FY2024 Amended Budget vs. FY2025 Original Budget (% Change)
Conway Economic Dev	\$47,500	\$400,000	\$400,000	\$400,000	\$140,000	-65%
Total Conway Economic Dev:	\$47,500	\$400,000	\$400,000	\$400,000	\$140,000	-65%



The Price LeBlanc PACE Center is a two-story 25,000 square-foot building located in the Heritage Crossing Development at the intersection of La. 44 and La. 30. The facility is designed to host expos, cultural and performing arts events, indoor concerts, banquets, balls, and more. The PACE Center is a powerful new anchor for tourism and economic development in Gonzales.

The PACE Center fund was established in 2019 when the citizens voted in favor of a 2% tax imposed on Hotels/Motels located within the City Limits of Gonzales. The proceeds from this 2% Hotel Occupancy tax shall be used to fund and operate the PACE Center.

Revenue by Fund

Name	FY2023 Actuals	FY2024 Original Budget	FY2024 Projected Actual	FY2024 Amended Budget	FY2025 Original Budget	FY2024 Amended Budget vs. FY2025 Original Budget (% Change)
Pace Center Tax						
Taxes						
HOTEL OCCUPANCY TAX	\$0		\$651,474	\$600,000	\$700,000	16.7%
Total Taxes:	\$0		\$651,474	\$600,000	\$700,000	16.7%
Interest Income						
INTEREST EARNED	\$32,342		\$82,815	\$0	\$20,000	N/A
Total Interest Income:	\$32,342		\$82,815	\$0	\$20,000	N/A
Miscellaneous Income						
CONCESSIONS	\$0		-\$3,750	\$15,000	\$15,000	0%
MISCELLANEOUS REVENUE	\$0		-\$625	\$2,500	\$2,500	0%
PACE CENTER REVENUES		\$894,500	\$0	\$0	\$0	0%
Total Miscellaneous Income:	\$0	\$894,500	-\$4,375	\$17,500	\$17,500	0%
Grant Income						
VISITOR ENTERPRISE ALLOCATION	\$0		-\$50,000	\$50,000	\$50,000	0%
SPONSORSHIPS/NAMING RIGHT	\$75,000		\$80,000	\$65,000	\$70,000	7.7%
Total Grant Income:	\$75,000		\$30,000	\$115,000	\$120,000	4.3%
Rental Revenue						
FACILITY RENTALS	\$0		\$77,631	\$145,000	\$165,000	13.8%
FURNITURE/EQUIPMENT RENTAL	\$0		-\$1,500	\$6,000	\$6,500	8.3%
EVENT SERVICES	\$0		-\$1,250	\$5,000	\$27,600	452%
AUDIO/VISUAL RENTAL	\$0		-\$1,500	\$6,000	\$7,000	16.7%
TICKET SALES	\$0		\$0	\$0	\$100,000	N/A
Total Rental Revenue:	\$0		\$73,381	\$162,000	\$306,100	89%
Total Pace Center Tax:	\$107,342	\$894,500	\$833,295	\$894,500	\$1,163,600	30.1%

Expenditures by Fund

Name	FY2023 Actuals	FY2024 Original Budget	FY2024 Projected Actual	FY2024 Amended Budget	FY2025 Original Budget	FY2024 Amended Budget vs. FY2025 Original Budget (% Change)
Pace Center Tax						
Payroll						
SALARIES	\$16,783	\$250,000	\$123,080	\$230,000	\$230,000	0%
SECURITY DETAIL	\$0		\$10,575	\$0	\$18,000	N/A
PART TIME LABOR	\$0		\$1,300	\$0	\$3,600	N/A
PACE OVERTIME	\$0		\$26,645	\$0	\$30,000	N/A
RETIREMENT	\$2,568	\$68,000	\$31,506	\$68,000	\$64,000	-5.9%
MEDICARE TAX	\$195		\$1,257	\$0	\$1,500	N/A
WORKERS COMP	\$0	\$7,000	\$0	\$7,000	\$7,000	0%
HEALTH INSURANCE	\$0		\$8,600	\$20,000	\$30,000	50%
Total Payroll:	\$19,546	\$325,000	\$202,962	\$325,000	\$384,100	18.2%
Supplies & Maintenance						
OFFICE SUPPLIES	\$0		\$7,380	\$5,000	\$7,000	40%
LANDSCAPE MAINTENANCE	\$0		\$0	\$5,000	\$5,000	0%
BUILDING MAINTENANCE	\$0		\$3,147	\$50,000	\$75,000	50%
IMPROVEMENTS/REPLACEMENTS	\$0		\$0	\$20,000	\$22,000	10%
Total Supplies & Maintenance:	\$0		\$10,527	\$80,000	\$109,000	36.3%
Utilities						
UTILITIES	\$0		\$0	\$3,000	\$3,000	0%
ELECTRICITY	\$0		\$50,336	\$20,000	\$75,000	275%
PHONE & INTERNET	\$0		\$257	\$2,500	\$6,000	140%
Total Utilities:	\$0		\$50,593	\$25,500	\$84,000	229.4%
Insurance						
GENERAL INSURANCE	\$0		\$39,693	\$20,000	\$60,000	200%
Total Insurance:	\$0		\$39,693	\$20,000	\$60,000	200%
Education						
LICENSES & PROF MEMBERSHI	\$0		\$371	\$2,000	\$4,000	100%
TRAVEL & TRANSPORTATION	\$0		\$2,746	\$10,000	\$10,000	0%
MARKETING	\$265		\$55,172	\$100,000	\$60,000	-40%
PERFORMING ACTS	\$0		\$0	\$0	\$100,000	N/A
Total Education:	\$265		\$58,289	\$112,000	\$174,000	55.4%
Miscellaneous						
PACE Loan interest	\$0		\$85,690	\$160,000	\$164,628	2.9%
PACE Loan principal	\$0		\$174,000	\$168,000	\$181,000	7.7%
Total Miscellaneous:	\$0		\$259,690	\$328,000	\$345,628	5.4%
Capital Expense						
PACE CENTER EXPENSES	\$119,010	\$565,500	\$106,679	\$0	\$0	0%



Name	FY2023 Actuals	FY2024 Original Budget	FY2024 Projected Actual	FY2024 Amended Budget	FY2025 Original Budget	FY2024 Amended Budget vs. FY2025 Original Budget (% Change)
Total Capital Expense:	\$119,010	\$565,500	\$106,679	\$0	\$0	0%
Total Pace Center Tax:	\$138,821	\$890,500	\$728,433	\$890,500	\$1,156,728	29.9%

PACE Center Ribbon Cutting



The Price LeBlanc PACE (Performance, Arts, Conference & Events) Center celebrated its grand opening January 9, 2024. The PACE Center is officially open for business!